

## Anti-TGFBR2 antibody (200-300) [S4851RM] (STJ11104851)

### GENERAL INFORMATION

Product Type	Primary antibodies
Applications	WB/IHC-P/ELISA
Host / Source	Rabbit
Reactivity	Human/Mouse

### PRODUCT PROPERTIES

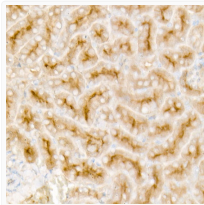
Clonality	Monoclonal
Concentration	Lot specific
Conjugation	Unconjugated
Purification	Affinity purification
Dilution Range	WB:1:5000-1:9600 IHC-P:1:50-1:200 ELISA:Recommended starting concentration is 1 Mu g/mL. Please optimize the concentration based on your specific assay requirements.
Formulation	PBS with 0.05% Proclin300, 0.05% BSA, 50% Glycerol, pH 7.3.
Isotype	IgG
Molecular Weight	Protein Mw: 65kDa Observed Mw: 65kDa, 85kDa
Storage Instruction	Store at -20°C for up to 1 year from the date of receipt, and avoid repeat freeze-thaw cycles.

### TARGET INFORMATION

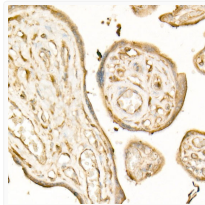
Gene ID	<a href="#">7048</a>
Gene Symbol	<a href="#">TGFBFR2</a>
UniProt ID	<a href="#">TGFR2_HUMAN</a>
Immunogen Region	200-300
Immunogen Sequence	TWETGKTRKLMFESEHCII LEDDRSDISSTCANNINHNT ELLPIELDTLVGKGRFAEVY KAKLKQNTSEQFETVAVKIF PYEEYASWKTEKDFSDINL K
Specificity	A synthetic peptide corresponding to a sequence within amino acids 200-300 of human TGF beta Receptor II (TGFBFR2) (NP_003233.4).

### ADDITIONAL INFORMATION

Note STRICTLY FOR FURTHER SCIENTIFIC RESEARCH USE ONLY (RUO). MUST NOT TO BE USED IN DIAGNOSTIC OR THERAPEUTIC APPLICATIONS.



Immunohistochemistry analysis of paraffin-embedded mouse kidney using TGF beta Receptor II (TGFBFR2) Rabbit monoclonal antibody (STJ11104851) at dilution of 1:200 (40x lens). Perform high pressure antigen retrieval with 10 mM citrate buffer pH 6.0 before commencing with immunohistochemistry staining protocol.



Immunohistochemistry analysis of paraffin-embedded human placenta using TGF beta Receptor II (TGFBFR2) Rabbit monoclonal antibody (STJ11104851) at dilution of 1:200 (40x lens). Perform high pressure antigen retrieval with 10 mM citrate buffer pH 6.0 before commencing with immunohistochemistry staining protocol.