

## Anti-CPT1A antibody (520-720) [S4846RM] (STJ11104846)

### GENERAL INFORMATION

Product Type	Primary antibodies
Applications	WB/ELISA
Host / Source	Rabbit
Reactivity	Human

### PRODUCT PROPERTIES

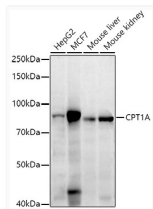
Clonality	Monoclonal
Concentration	Lot specific
Conjugation	Unconjugated
Purification	Affinity purification
Dilution Range	WB:1:1000-1:2000 ELISA:Recommended starting concentration is 1 µg/mL. Please optimize the concentration based on your specific assay requirements.
Formulation	PBS with 0.05% Proclin300, 0.05% BSA, 50% Glycerol, pH 7.3.
Isotype	IgG
Molecular Weight	Protein Mw: 88kDa Observed Mw: 88kDa/
Storage Instruction	Store at -20°C for up to 1 year from the date of receipt, and avoid repeat freeze-thaw cycles.

### TARGET INFORMATION

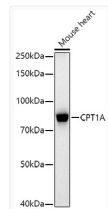
Gene ID	<a href="#">1374</a>
Gene Symbol	<a href="#">CPT1A</a>
UniProt ID	<a href="#">CPT1A_HUMAN</a>
Immunogen Region	520-720
Immunogen Sequence	WDIPGECQEVIETSLNTANL LANDVDFHSFPFVAFGKGII KKCRTPDAFVQLALQLAHY KDMGKFCFLTYEASMTLRFRE GRTEIVRSCITTESCDFVRAM VDPAQTV EQRLKLFKLA SEK HQHMYRLAMTGGSGIDRHLFC LYVSKYLAVESPFLEKVLSPWRLSTSQTPQQQVELFDL ENNPEYVSSGGGGFVPVADDD Y
Specificity	Recombinant fusion protein containing a sequence corresponding to amino acids 520-720 of human CPT1A (NP_001867.2).

### ADDITIONAL INFORMATION

Note **STRICTLY FOR FURTHER SCIENTIFIC RESEARCH USE ONLY (RUO). MUST NOT TO BE USED IN DIAGNOSTIC OR THERAPEUTIC APPLICATIONS.**



Western blot analysis of extracts of various cell lines, using CPT1A antibody (STJ11104846) at 1:1000 dilution. Secondary antibody: HRP Goat Anti-Rabbit IgG (H+L) (STJS000856) at 1:10000 dilution. Lysates/proteins: 25 µg per lane. Blocking buffer: 3% nonfat dry milk in TBST. Detection: ECL Enhanced Kit. Exposure time: 180s.



Western blot analysis of extracts of Mouse heart, using CPT1A antibody (STJ11104846) at 1:1000 dilution. Secondary antibody: HRP Goat Anti-Rabbit IgG (H+L) (STJS000856) at 1:10000 dilution. Lysates/proteins: 25 µg per lane. Blocking buffer: 3% nonfat dry milk in TBST. Detection: ECL Basic Kit. Exposure time: 180s.