

Anti-FITC/5-FAM/6-FAM antibody [S4842RM] (STJ11104842)

GENERAL INFORMATION

Product Type	Primary antibodies
Applications	WB/ELISA
Host / Source	Rabbit
Reactivity	Species Independent

PRODUCT PROPERTIES

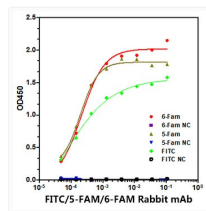
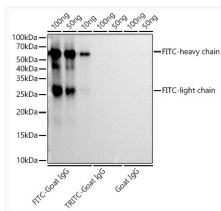
Clonality	Monoclonal
Concentration	Lot specific
Conjugation	Unconjugated
Purification	Affinity purification
Dilution Range	WB:1:2000-1:4800 ELISA:1:500-1:2000
Formulation	PBS with 0.05% Proclin300, 0.05% BSA, 50% Glycerol, pH 7.3.
Isotype	IgG
Molecular Weight	25kDa/55kDa
Storage Instruction	Store at -20°C for up to 1 year from the date of receipt, and avoid repeat freeze-thaw cycles.

TARGET INFORMATION

Immunogen Sequence	FITC conjugated to K LH
Specificity	FITC

ADDITIONAL INFORMATION

Note STRICTLY FOR FURTHER SCIENTIFIC RESEARCH USE ONLY (RUO). MUST NOT TO BE USED IN DIAGNOSTIC OR THERAPEUTIC APPLICATIONS.



The FITC rabbit monoclonal antibody (STJ11104842) are tested in Western blot against FITC Goat IgG (TRITC Goat IgG and Goat IgG (STJS000858). Secondary antibody: HRP Goat Anti-Rabbit IgG (H+L) (STJS000856) at 1:10000 dilution. Lysates/proteins: 25 μ g per lane. Blocking buffer: 3% nonfat dry milk in TBST. Detection: ECL Basic Kit. Exposure time: 10s.

Immobilized biotin-6 Fam, biotin-5 Fam, biotin-FITC, at 1 μ g/mL (25 μ g/L/well), of which EC50 ranges are 0.18-0.40 ng/mL, 0.19-0.29 ng/mL and 0.15-0.29 ng/mL, can bind anti 6-Fam/5-Fam/FITC monoclonal antibody (STJ11104842), respectively.