

Anti-FTH1 antibody (84-183) [S4840RM] (STJ11104840)

GENERAL INFORMATION

Product Type	Primary antibodies
Applications	IHC-P/ELISA
Host / Source	Rabbit
Reactivity	Human

PRODUCT PROPERTIES

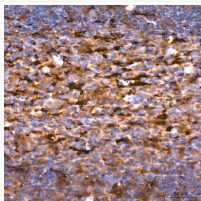
Clonality	Monoclonal
Concentration	Lot specific
Conjugation	Unconjugated
Purification	Affinity purification
Dilution Range	IHC-P:1:50-1:200 ELISA: Recommended starting concentration is 1 µg/mL. Please optimize the concentration based on your specific assay requirements.
Formulation	PBS with 0.02% Sodium Azide, 0.05% BSA, 50% Glycerol, pH 7.3.
Isotype	IgG
Molecular Weight	Protein Mw: 21kDa Observed Mw: Refer to figures
Storage Instruction	Store at -20°C for up to 1 year from the date of receipt, and avoid repeat freeze-thaw cycles.

TARGET INFORMATION

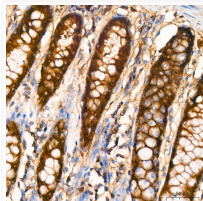
Gene ID	2495
Gene Symbol	FTH1
UniProt ID	FRIH_HUMAN
Immunogen Region	84-183
Immunogen Sequence	QDIKKPDCDDWESGLNAMEC ALHLEKNVNQSLLELHKLAT DKNDPHLCDFIETHYLNEQV KAIKELGDHVTNLRKMGAPESGLAEYLFDKHTLGDSDNES
Specificity	A synthetic peptide corresponding to a sequence within amino acids 84-183 of human Ferritin Heavy Chain (P02794).

ADDITIONAL INFORMATION

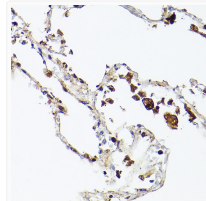
Note **STRICTLY FOR FURTHER SCIENTIFIC RESEARCH USE ONLY (RUO). MUST NOT TO BE USED IN DIAGNOSTIC OR THERAPEUTIC APPLICATIONS.**



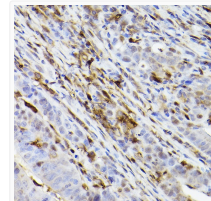
Immunohistochemistry analysis of Ferritin Heavy Chain in paraffin-embedded human tonsil tissue using Ferritin Heavy Chain Rabbit monoclonal antibody (STJ11104840) at a dilution of 1:200 (40x lens). High pressure antigen retrieval was performed with 0.01 M citrate buffer (pH 6.0) prior to immunohistochemistry staining.



Immunohistochemistry analysis of Ferritin Heavy Chain in paraffin-embedded human colon tissue using Ferritin Heavy Chain Rabbit monoclonal antibody (STJ11104840) at a dilution of 1:200 (40x lens). High pressure antigen retrieval was performed with 0.01 M citrate buffer (pH 6.0) prior to immunohistochemistry staining.



Immunohistochemistry analysis of paraffin-embedded human lung using Ferritin Heavy Chain Rabbit monoclonal antibody (STJ11104840) at dilution of 1:100 (40x lens). Perform high pressure antigen retrieval with 10 mM citrate buffer pH 6.0 before commencing with immunohistochemistry staining protocol.



Immunohistochemistry analysis of paraffin-embedded human colon carcinoma using Ferritin Heavy Chain Rabbit monoclonal antibody (STJ11104840) at dilution of 1:100 (40x lens). Perform high pressure antigen retrieval with 10 mM citrate buffer pH 6.0 before commencing with immunohistochemistry staining protocol.