

## Anti-KRT19 antibody (301-400) [S4838RM] (STJ11104838)

### GENERAL INFORMATION

Product Type	Primary antibodies
Applications	IHC-P/ELISA
Host / Source	Rabbit
Reactivity	Human/Mouse/Rat

### PRODUCT PROPERTIES

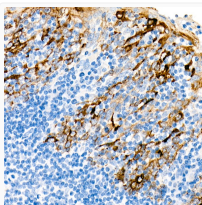
Clonality	Monoclonal
Concentration	Lot specific
Conjugation	Unconjugated
Purification	Affinity purification
Dilution Range	IHC-P:1:50-1:200 ELISA:Recommended starting concentration is 1 µg/mL. Please optimize the concentration based on your specific assay requirements.
Formulation	PBS with 0.02% Sodium Azide, 0.05% BSA, 50% Glycerol, pH 7.3.
Isotype	IgG
Molecular Weight	Protein Mw: 44kDa Observed Mw: Refer to figures
Storage Instruction	Store at -20°C for up to 1 year from the date of receipt, and avoid repeat freeze-thaw cycles.

### TARGET INFORMATION

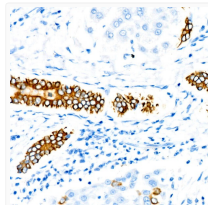
Gene ID	<a href="#">3880</a>
Gene Symbol	<a href="#">KRT19</a>
UniProt ID	<a href="#">K1C19_HUMAN</a>
Immunogen Region	301-400
Immunogen Sequence	RTLQGLEIQLSQLSMKAAL EDTLAETEAFGAQLAHIQA LISGIEAQLGDVRADSERQN QEYQRLMDIKSRLEQEIATY RSLLEGQEDHYNNLSASKVL
Specificity	A synthetic peptide corresponding to a sequence within amino acids 301-400 of human Cytokeratin 19 (KRT19) (P08727).

### ADDITIONAL INFORMATION

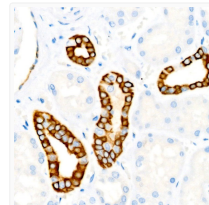
Note **STRICTLY FOR FURTHER SCIENTIFIC RESEARCH USE ONLY (RUO). MUST NOT TO BE USED IN DIAGNOSTIC OR THERAPEUTIC APPLICATIONS.**



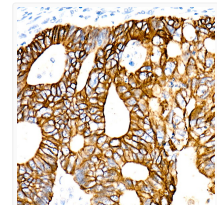
Immunohistochemistry analysis of paraffin-embedded human tonsil using Cytokeratin 19 (KRT19) Rabbit monoclonal antibody (STJ11104838) at dilution of 1:100 (40x lens). Perform microwave antigen retrieval with 10 mM PBS buffer pH 7.2 before commencing with immunohistochemistry staining protocol.



Immunohistochemistry analysis of paraffin-embedded human liver using Cytokeratin 19 (KRT19) Rabbit monoclonal antibody (STJ11104838) at dilution of 1:100 (40x lens). Perform microwave antigen retrieval with 10 mM PBS buffer pH 7.2 before commencing with immunohistochemistry staining protocol.



Immunohistochemistry analysis of paraffin-embedded human kidney using Cytokeratin 19 (KRT19) Rabbit monoclonal antibody (STJ11104838) at dilution of 1:100 (40x lens). Perform microwave antigen retrieval with 10 mM PBS buffer pH 7.2 before commencing with immunohistochemistry staining protocol.



Immunohistochemistry analysis of paraffin-embedded human colon carcinoma using Cytokeratin 19 (KRT19) Rabbit monoclonal antibody (STJ11104838) at dilution of 1:100 (40x lens). Perform microwave antigen retrieval with 10 mM PBS buffer pH 7.2 before commencing with immunohistochemistry staining protocol.