

Anti-TOMM70 antibody (245-608) [S4820RM] (STJ11104820)

GENERAL INFORMATION

Product Type	Primary antibodies
Applications	WB/ELISA
Host / Source	Rabbit
Reactivity	Human/Mouse/Rat

PRODUCT PROPERTIES

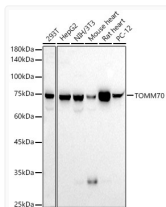
Clonality	Monoclonal
Concentration	Lot specific
Conjugation	Unconjugated
Purification	Affinity purification
Dilution Range	WB:1:500-1:1000 ELISA:Recommended starting concentration is 1 µg/mL. Please optimize the concentration based on your specific assay requirements.
Formulation	PBS with 0.05% Proclin300, 0.05% BSA, 50% Glycerol, pH 7.3.
Isotype	IgG
Molecular Weight	Protein Mw: 67kDa Observed Mw: 75kDa
Storage Instruction	Store at -20°C for up to 1 year from the date of receipt, and avoid repeat freeze-thaw cycles.

TARGET INFORMATION

Gene ID	9868
Gene Symbol	TOMM70
UniProt ID	TOM70_HUMAN
Immunogen Region	245-608
Immunogen Sequence	KNREPLMPSPQFIKSYFSSF TDDIISQPMLKGEKSDEDKD KEGEALVKNENSGYLKAKQY MEEENYDKIISECSKEIDAE GKYM AEALLLRATFYLLIGN ANAAKPDLDKVISLKEANVK LRANALIKRGS MYMQQQQPL LSTQDFNMAADIDPQNADVY HHRGQLKILLDQVEEAVADF DECIRLRPESALAQAKCFA LYRQAYTGNSSQIQAAAMKG FEEVIKKFPRCAEGYALYA
Specificity	Recombinant fusion protein containing a sequence corresponding to amino acids 245-608 of human TOM70 (NP_055635.3).

ADDITIONAL INFORMATION

Note STRICTLY FOR FURTHER SCIENTIFIC RESEARCH USE ONLY (RUO). MUST NOT TO BE USED IN DIAGNOSTIC OR THERAPEUTIC APPLICATIONS.



Western blot analysis of various lysates, using TOMM70 antibody (STJ11104820) at 1:1000 dilution. Secondary antibody: HRP Goat Anti-Rabbit IgG (H+L) (STJS000856) at 1:10000 dilution. Lysates/proteins: 25 µg per lane. Blocking buffer: 3% nonfat dry milk in TBST. Detection: ECL Basic Kit. Exposure time: 90s.