

Anti-IL18R1 antibody (141-320) [S4819RM] (STJ11104819)

GENERAL INFORMATION

| | |
|---------------|--------------------|
| Product Type | Primary antibodies |
| Applications | WB/ELISA |
| Host / Source | Rabbit |
| Reactivity | Human/Mouse |

PRODUCT PROPERTIES

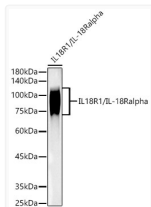
| | |
|---------------------|---|
| Clonality | Monoclonal |
| Concentration | Lot specific |
| Conjugation | Unconjugated |
| Purification | Affinity purification |
| Dilution Range | WB:1:1000-1:5000 ELISA:Recommended starting concentration is 1 Mu g/mL. Please optimize the concentration based on your specific assay requirements. |
| Formulation | PBS with 0.05% Proclin300, 0.05% BSA, 50% Glycerol, pH 7.3. |
| Isotype | IgG |
| Molecular Weight | Protein Mw: 62kDa Observed Mw: 80-105kDa |
| Storage Instruction | Store at -20°C for up to 1 year from the date of receipt, and avoid repeat freeze-thaw cycles. |

TARGET INFORMATION

| | |
|--------------------|--|
| Gene ID | 8809 |
| Gene Symbol | IL18R1 |
| UniProt ID | IL18R_HUMAN |
| Immunogen Region | 141-320 |
| Immunogen Sequence | ENSYQTLVNSTSLYKNCKK LLENNKNPTIKKNAEFEDQ GYYSVHFLHHNGKLFNITK TFNITIVEDRSNIVPVLGPKLNHVAVELGKNVRLNCSAL LNEEDVIYWMFGEENGSDPN IHEEKEMRIMTPEGKWHASK VLRIENIGESNLNVLNCTV ASTGGTDTKSFILVRKADMA |
| Specificity | Recombinant fusion protein containing a sequence corresponding to amino acids 141-320 of human IL18R1/IL-18 R alpha (NP_003846.1). |

ADDITIONAL INFORMATION

Note STRICTLY FOR FURTHER SCIENTIFIC RESEARCH USE ONLY (RUO). MUST NOT TO BE USED IN DIAGNOSTIC OR THERAPEUTIC APPLICATIONS.



Western blot analysis of various lysates, using IL18R1/IL-18Ralpha antibody (STJ11104819) at 1:1000 dilution. Secondary antibody: HRP Goat Anti-Rabbit IgG (H+L) (STJS000856) at 1:10000 dilution. Lysates/proteins: 25 Mu g per lane. Blocking buffer: 3% nonfat dry milk in TBST. Detection: ECL Basic Kit. Exposure time: 3s.