

Anti-CCNE1 antibody (300-400) [S4815RM] (STJ11104815)

GENERAL INFORMATION

| | |
|---------------|--------------------|
| Product Type | Primary antibodies |
| Applications | WB/IHC-P/ELISA |
| Host / Source | Rabbit |
| Reactivity | Human/Mouse/Rat |

PRODUCT PROPERTIES

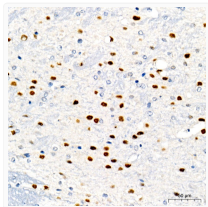
| | |
|---------------------|--|
| Clonality | Monoclonal |
| Concentration | Lot specific |
| Conjugation | Unconjugated |
| Purification | Affinity purification |
| Dilution Range | WB:1:1000-1:2000 IHC-P:1:100-1:500 ELISA:Recommended starting concentration is 1 Mu g/mL. Please optimize the concentration based on your specific assay requirements. |
| Formulation | PBS with 0.09% Sodium Azide, 0.05% BSA, 50% Glycerol, pH7.3. |
| Isotype | IgG |
| Molecular Weight | Protein Mw: 47kDa Observed Mw: 48kDa |
| Storage Instruction | Store at -20°C for up to 1 year from the date of receipt, and avoid repeat freeze-thaw cycles. |

TARGET INFORMATION

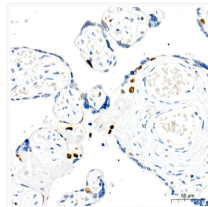
| | |
|--------------------|--|
| Gene ID | 898 |
| Gene Symbol | CCNE1 |
| UniProt ID | CCNE1_HUMAN |
| Immunogen Region | 300-400 |
| Immunogen Sequence | AASALYHFSSSELMQKVSGY QWCDIENCVKWMPFAMVIR ETGSSKCLKHFRGVADEDAHNIQTHRDSLDDLLDKARAKKAM LSEQNRASPLPSGLLTPPQS G |
| Specificity | A synthetic peptide corresponding to a sequence within amino acids 300-400 of human Cyclin E1 (NP_001229.1). |

ADDITIONAL INFORMATION

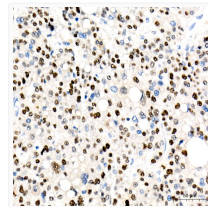
Note STRICTLY FOR FURTHER SCIENTIFIC RESEARCH USE ONLY (RUO). MUST NOT TO BE USED IN DIAGNOSTIC OR THERAPEUTIC APPLICATIONS.



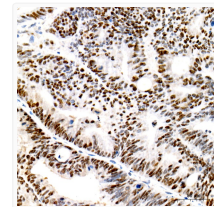
Immunohistochemistry analysis of Cyclin E1 in paraffin-embedded mouse brain using Cyclin E1 Rabbit monoclonal antibody (STJ11104815) at dilution of 1:100 (40x lens). Perform high pressure antigen retrieval with 10 mM citrate buffer pH 6.0 before commencing with immunohistochemistry staining protocol.



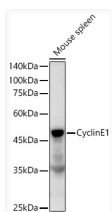
Immunohistochemistry analysis of Cyclin E1 in paraffin-embedded human placenta using Cyclin E1 Rabbit monoclonal antibody (STJ11104815) at dilution of 1:100 (40x lens). Perform high pressure antigen retrieval with 10 mM citrate buffer pH 6.0 before commencing with immunohistochemistry staining protocol.



Immunohistochemistry analysis of Cyclin E1 in paraffin-embedded human liver cancer using Cyclin E1 Rabbit monoclonal antibody (STJ11104815) at dilution of 1:100 (40x lens). Perform high pressure antigen retrieval with 10 mM citrate buffer pH 6.0 before commencing with immunohistochemistry staining protocol.



Immunohistochemistry analysis of Cyclin E1 in paraffin-embedded human colon carcinoma using Cyclin E1 Rabbit monoclonal antibody (STJ11104815) at dilution of 1:100 (40x lens). Perform high pressure antigen retrieval with 10 mM citrate buffer pH 6.0 before commencing with immunohistochemistry staining protocol.



Western blot analysis of lysates from Mouse spleen, using Cyclin E1 Rabbit monoclonal antibody (STJ11104815) at 1:1000 dilution. Secondary antibody: HRP Goat Anti-Rabbit IgG (H+L) (STJS000856) at 1:10000 dilution. Lysates/proteins: 25 Mu g per lane. Blocking buffer: 3% nonfat dry milk in TBST. Detection: ECL Basic Kit. Exposure time: 90s.