

Anti-MERS-CoV Nucleoprotein antibody (1-413) [S4812RM] (STJ11104812)

GENERAL INFORMATION

Product Type	Primary antibodies
Applications	WB/ELISA
Host / Source	Rabbit
Reactivity	Human

PRODUCT PROPERTIES

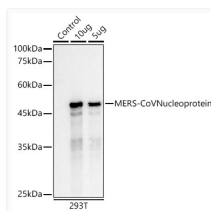
Clonality	Monoclonal
Concentration	Lot specific
Conjugation	Unconjugated
Purification	Affinity purification
Dilution Range	WB:1:1000-1:5000 ELISA:Recommended starting concentration is 1 Mu g/mL. Please optimize the concentration based on your specific assay requirements.
Formulation	PBS with 0.05% Proclin300, 0.05% BSA, 50% Glycerol, pH 7.3.
Isotype	IgG
Molecular Weight	Protein Mw: 45kDa Observed Mw: 47kDa
Storage Instruction	Store at -20°C for up to 1 year from the date of receipt, and avoid repeat freeze-thaw cycles.

TARGET INFORMATION

Immunogen Region	1-413
Immunogen Sequence	MASPAAPRAVSFADNNDITN TNL SRGRGRNPKPRAAPNNT VSWYTGTLTQH GKVPLTFPPG QGVPLNANSTPAQNAGYWRR QDRKINTGNGIKQLAPRWYF YYTGTGPEAALPFRAVKDGI VVWHEDGATDAPSTFGTRNP NNSAIVTQFAPGTLKPKNF HIEGTGNSQSSSRASSLSR NSSRSSSQGSRSGNSTRGTS PGPSGIGAVGGDLLYDLLN RLQALESGKVKQSQPKVIT
Specificity	Recombinant fusion protein containing a sequence corresponding to amino acids 1-413 of coronavirus MERS-CoV Nucleoprotein (YP_009047211.1).

ADDITIONAL INFORMATION

Note STRICTLY FOR FURTHER SCIENTIFIC RESEARCH USE ONLY (RUO). MUST NOT TO BE USED IN DIAGNOSTIC OR THERAPEUTIC APPLICATIONS.



Western blot analysis of 293T, using MERS-CoV Nucleoprotein antibody (STJ11104812) at 1:3000 dilution. Secondary antibody: HRP Goat Anti-Rabbit IgG (H+L) (STJS000856) at 1:10000 dilution. Lysates/proteins: 25 Mu g per lane. Blocking buffer: 3% nonfat dry milk in TBST. Detection: ECL Basic Kit. Exposure time: 1s.