

## Anti-NPHP1 antibody (463-732) [S4800RM] (STJ11104800)

### GENERAL INFORMATION

Product Type	Primary antibodies
Applications	WB/ELISA
Host / Source	Rabbit
Reactivity	Human/Mouse/Rat

### PRODUCT PROPERTIES

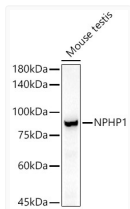
Clonality	Monoclonal
Concentration	Lot specific
Conjugation	Unconjugated
Purification	Affinity purification
Dilution Range	WB:1:500-1:1000 ELISA:Recommended starting concentration is 1 Mu g/mL. Please optimize the concentration based on your specific assay requirements.
Formulation	PBS with 0.05% Proclin300, 0.05% BSA, 50% Glycerol, pH 7.3.
Isotype	IgG
Molecular Weight	Protein Mw: 83kDa Observed Mw: 83kDa
Storage Instruction	Store at -20°C for up to 1 year from the date of receipt, and avoid repeat freeze-thaw cycles.

### TARGET INFORMATION

Gene ID	<a href="#">4867</a>
Gene Symbol	<a href="#">NPHP1</a>
UniProt ID	<a href="#">NPHP1_HUMAN</a>
Immunogen Region	463-732
Immunogen Sequence	PDLGILFELGISYIRNSTGE RGELSCGWVFLKLFASGVP IPAKTYELFLNGGTPYEKGI EVDPSISRRAHGSVFYQIMT MRRQPQLLVKLRSLNRRSRN VLSLLPETLIGNMCSIHLI FYRQILGDVLLKDRMSLQST DLISHPMLATFPMLLEQPDV MDALRSSWAGKESTLKRSEK RDKEFLKSTFLLVYHDCVLP LLHSTRLPFFRWAEETETA RWKVVITDFLKQNKQENQGAL
Specificity	Recombinant fusion protein containing a sequence corresponding to amino acids 463-732 of human NPHP1 (NP_997064.2).

### ADDITIONAL INFORMATION

Note **STRICTLY FOR FURTHER SCIENTIFIC RESEARCH USE ONLY (RUO). MUST NOT TO BE USED IN DIAGNOSTIC OR THERAPEUTIC APPLICATIONS.**



Western blot analysis of Mouse testis, using NPHP1 antibody (STJ11104800) at 1:1000 dilution. Secondary antibody: HRP Goat Anti-Rabbit IgG (H+L) (STJS000856) at 1:10000 dilution. Lysates/proteins: 25 Mu g per lane. Blocking buffer: 3% nonfat dry milk in TBST. Detection: ECL Basic Kit. Exposure time: 180s.