

## Anti-Complement C3 antibody (1364-1663) [S4784RM] (STJ11104784)

### GENERAL INFORMATION

Product Type	Primary antibodies
Applications	WB/ELISA
Host / Source	Rabbit
Reactivity	Mouse/Rat

### PRODUCT PROPERTIES

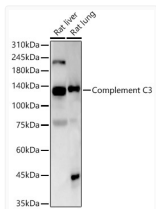
Clonality	Monoclonal
Concentration	Lot specific
Conjugation	Unconjugated
Purification	Affinity purification
Dilution Range	WB:1:1000-1:6000 ELISA:Recommended starting concentration is 1 µg/mL. Please optimize the concentration based on your specific assay requirements.
Formulation	PBS with 0.05% Proclin300, 0.05% BSA, 50% Glycerol, pH 7.3.
Isotype	IgG
Molecular Weight	Protein Mw: 186kDa Observed Mw: 115kDa/187kDa
Storage Instruction	Store at -20°C for up to 1 year from the date of receipt, and avoid repeat freeze-thaw cycles.

### TARGET INFORMATION

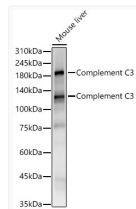
Gene ID	<a href="#">12266</a>
Gene Symbol	<a href="#">C3</a>
UniProt ID	<a href="#">CO3_MOUSE</a>
Immunogen Region	1364-1663
Immunogen Sequence	RVSIRPAPETAKKPEEAKNT MFLEICTKYLGDVDATMSIL DISMMTGAFDPDKDELLAS GVDRIYSKYEMNKAFSNKNT LIIYLEKISHTEEDCLTFKV HQYFNVGLIQGSKVYSYY NLEESCTRFYHPEKDDGMLS KLCHSEMCRCAEENCFMQQS QEKINLNVRLDKACEPGVDY VYKTELNIELLDDFDEYTM TIQQVIKSGSDEVQAGQQRK FISHIKCRNALKLQKGGKKY
Specificity	Recombinant fusion protein containing a sequence corresponding to amino acids 1364-1663 of mouse Complement C3 (NP_033908.2).

### ADDITIONAL INFORMATION

Note **STRICTLY FOR FURTHER SCIENTIFIC RESEARCH USE ONLY (RUO). MUST NOT TO BE USED IN DIAGNOSTIC OR THERAPEUTIC APPLICATIONS.**



Western blot analysis of various lysates, using Complement C3 antibody (STJ11104784) at 1:1000 dilution. Secondary antibody: HRP Goat Anti-Rabbit IgG (H+L) (STJS000856) at 1:10000 dilution. Lysates/proteins: 25 µg per lane. Blocking buffer: 3% nonfat dry milk in TBST. Detection: ECL Basic Kit. Exposure time: 10s.



Western blot analysis of Mouse liver, using Complement C3 antibody (STJ11104784) at 1:1000 dilution. Secondary antibody: HRP Goat Anti-Rabbit IgG (H+L) (STJS000856) at 1:10000 dilution. Lysates/proteins: 25 µg per lane. Blocking buffer: 3% nonfat dry milk in TBST. Detection: ECL Basic Kit. Exposure time: 10s.