

Anti-APRR7 antibody (236-339 aa) (STJ11104779)

GENERAL INFORMATION

Product Type	Primary antibodies
Applications	WB/ELISA
Host / Source	Rabbit
Reactivity	A.thaliana

PRODUCT PROPERTIES

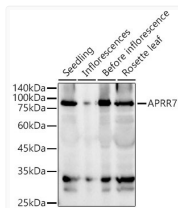
Clonality	Polyclonal
Concentration	Lot specific
Conjugation	Unconjugated
Purification	Affinity purification
Dilution Range	WB:1:500-1:1000 ELISA:Recommended starting concentration is 1 Mu g/mL. Please optimize the concentration based on your specific assay requirements.
Formulation	PBS with 0.05% Proclin300, 50% Glycerol, pH 7.3.
Isotype	IgG
Molecular Weight	80kDa
Storage Instruction	Store at-20°C for up to 1 year from the date of receipt, and avoid repeat freeze-thaw cycles.

TARGET INFORMATION

Immunogen Region	236-339 aa
Immunogen Sequence	ENENGSIQLNASDGSDDGSG AQSSWTKKAVDVDDSPRAVS LWDRVDSTCAQVVHSNPEFF SNQLVAPPAEKETQEHDCKF EDVTMGRDLEISIRRNCDLA LEPK
Specificity	Recombinant fusion protein containing a sequence corresponding to amino acids 236-339 of Arabidopsis thaliana APRR7 (NP_568107.1).

ADDITIONAL INFORMATION

Note STRICTLY FOR FURTHER SCIENTIFIC RESEARCH USE ONLY (RUO). MUST NOT TO BE USED IN DIAGNOSTIC OR THERAPEUTIC APPLICATIONS.



Western blot analysis of extracts of various tissues from Arabidopsis thaliana, using APRR7 Rabbit polyclonal antibody (STJ11104779) at 1:900 dilution. Secondary antibody: HRP Goat Anti-Rabbit IgG (H+L) (STJS000856) at 1:10000 dilution. Lysates/proteins: 25 Mu g per lane. Blocking buffer: 3% nonfat dry milk in TBST. Detection: ECL Basic Kit. Exposure time: 10s.