

Anti-NKX2-1 antibody (2-1) [S4774RM] (STJ11104774)

GENERAL INFORMATION

Product Type	Primary antibodies
Applications	IHC-P/ELISA
Host / Source	Rabbit
Reactivity	Human/Mouse/Rat

PRODUCT PROPERTIES

Clonality	Monoclonal
Concentration	Lot specific
Conjugation	Unconjugated
Purification	Affinity purification
Dilution Range	IHC-P:1:50-1:200 ELISA:Recommended starting concentration is 1 µg/mL. Please optimize the concentration based on your specific assay requirements.
Formulation	PBS with 0.02% Sodium Azide, 0.05% BSA, 50% Glycerol, pH 7.3.
Isotype	IgG
Molecular Weight	Protein Mw: 39kDa Observed Mw: Refer to figures
Storage Instruction	Store at -20°C for up to 1 year from the date of receipt, and avoid repeat freeze-thaw cycles.

TARGET INFORMATION

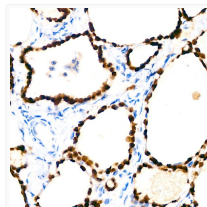
Gene ID	7080
Gene Symbol	NKX2-1
UniProt ID	NKX21_HUMAN
Immunogen Region	2-1
Immunogen Sequence	MSMSPKHTTFFSVSDILSPL EESYKVKVGMEGGGLGAPLAA YRQQAAPPTAAMQQHAVGH HGAVTAAAHMTAAGVPQLSH SAVGGYCNGNLGNMSELPPY
Specificity	Recombinant protein of human NKX2-1

ADDITIONAL INFORMATION

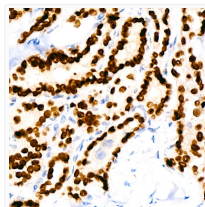
Note STRICTLY FOR FURTHER SCIENTIFIC RESEARCH USE ONLY (RUO). MUST NOT TO BE USED IN DIAGNOSTIC OR THERAPEUTIC APPLICATIONS.



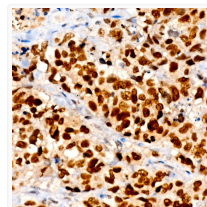
Immunohistochemistry analysis of paraffin-embedded mouse lung using NKX2-1 Rabbit monoclonal antibody (STJ11104774) at dilution of 1:100 (40x lens). Perform high pressure antigen retrieval with 10 mM citrate buffer pH 6.0 before commencing with immunohistochemistry staining protocol.



Immunohistochemistry analysis of paraffin-embedded human thyroid using NKX2-1 Rabbit monoclonal antibody (STJ11104774) at dilution of 1:100 (40x lens). Perform high pressure antigen retrieval with 10 mM citrate buffer pH 6.0 before commencing with immunohistochemistry staining protocol.



Immunohistochemistry analysis of paraffin-embedded human thyroid cancer using NKX2-1 Rabbit monoclonal antibody (STJ11104774) at dilution of 1:100 (40x lens). Perform high pressure antigen retrieval with 10 mM citrate buffer pH 6.0 before commencing with immunohistochemistry staining protocol.



Immunohistochemistry analysis of paraffin-embedded Human lung adenocarcinoma using NKX2-1 Rabbit monoclonal antibody (STJ11104774) at dilution of 1:100 (40x lens). Perform high pressure antigen retrieval with 10 mM citrate buffer pH 6.0 before commencing with immunohistochemistry staining protocol.