

## Anti-PTPN1 antibody (281-435) (STJ11104770)

### GENERAL INFORMATION

Product Type	Primary antibodies
Applications	WB/ELISA
Host / Source	Rabbit
Reactivity	Human/Rat

### PRODUCT PROPERTIES

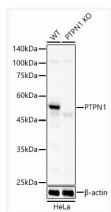
Clonality	Polyclonal
Concentration	Lot specific
Conjugation	Unconjugated
Purification	Affinity purification
Dilution Range	WB:1:500-1:1000 ELISA:Recommended starting concentration is 1 $\mu$ g/mL. Please optimize the concentration based on your specific assay requirements.
Formulation	PBS with 0.05% Proclin300, 50% Glycerol, pH 7.3.
Isotype	IgG
Molecular Weight	Protein Mw: 50kDa Observed Mw: 50kDa
Storage Instruction	Store at -20°C for up to 1 year from the date of receipt, and avoid repeat freeze-thaw cycles.

### TARGET INFORMATION

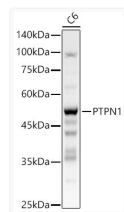
Gene ID	<a href="#">5770</a>
Gene Symbol	<a href="#">PTPN1</a>
UniProt ID	<a href="#">PTN1_HUMAN</a>
Immunogen Region	281-435
Immunogen Sequence	IMGDSSVQDQWKELSHEDLE PPPEHIPP PPRPPK RILEPH NGKCREFFPNHQWVKEETQE DKDCPIKEEKGSPLNAAPYG IESMSQDTEVRSRVVGGSLR GAQAASPAKGEPSLPEKDED HALSYWKPFVLNMCVATVLT AGAYLCYRFLFNSNT
Specificity	Recombinant fusion protein containing a sequence corresponding to amino acids 281-435 of human PTPN1 (NP_002818.1).

### ADDITIONAL INFORMATION

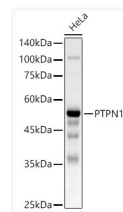
Note **STRICTLY FOR FURTHER SCIENTIFIC RESEARCH USE ONLY (RUO). MUST NOT TO BE USED IN DIAGNOSTIC OR THERAPEUTIC APPLICATIONS.**



Western blot analysis of lysates from wild type (WT) and PTPN1 knockout (KO) HeLa (KO) cells, using [KO Validated] PTPN1 Rabbit polyclonal antibody (STJ11104770) at 1:400 dilution. Secondary antibody: HRP Goat Anti-Rabbit IgG (H+L) (STJS000856) at 1:10000 dilution. Lysates/proteins: 25  $\mu$ g per lane. Blocking buffer: 3% nonfat dry milk in TBST. Detection: ECL Basic Kit. Exposure time: 1s.



Western blot analysis of lysates from C6 cells, using [KO Validated] PTPN1 Rabbit polyclonal antibody (STJ11104770) at 1:600 dilution. Secondary antibody: HRP Goat Anti-Rabbit IgG (H+L) (STJS000856) at 1:10000 dilution. Lysates/proteins: 25  $\mu$ g per lane. Blocking buffer: 3% nonfat dry milk in TBST. Detection: ECL Basic Kit. Exposure time: 1s.



Western blot analysis of lysates from HeLa cells, using [KO Validated] PTPN1 Rabbit polyclonal antibody (STJ11104770) at 1:600 dilution. Secondary antibody: HRP Goat Anti-Rabbit IgG (H+L) (STJS000856) at 1:10000 dilution. Lysates/proteins: 25  $\mu$ g per lane. Blocking buffer: 3% nonfat dry milk in TBST. Detection: ECL Basic Kit. Exposure time: 1s.