

Anti-SLC39A8 antibody (1-100) (STJ11104765)

GENERAL INFORMATION

Product Type	Primary antibodies
Applications	WB/ELISA
Host / Source	Rabbit
Reactivity	Human/Rat

PRODUCT PROPERTIES

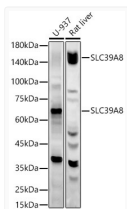
Clonality	Polyclonal
Concentration	Lot specific
Conjugation	Unconjugated
Purification	Affinity purification
Dilution Range	WB:1:1000-1:5000 ELISA:Recommended starting concentration is 1 Mu g/mL. Please optimize the concentration based on your specific assay requirements.
Formulation	PBS with 0.05% Proclin300, 50% Glycerol, pH 7.3.
Isotype	IgG
Molecular Weight	Protein Mw: 50kDa Observed Mw: 65kDa/130kDa
Storage Instruction	Store at -20°C for up to 1 year from the date of receipt, and avoid repeat freeze-thaw cycles.

TARGET INFORMATION

Gene ID	64116
Gene Symbol	SLC39A8
UniProt ID	S39A8_HUMAN
Immunogen Region	1-100
Immunogen Sequence	MAPGRAVAGLLLLAAAGLGG VAEGPGLAFSEDVLSVFGAN LLSAAQLQHLLLEQMGAASR VGVPPEPGLHFNQCLTAE EI FSLHGFSNATQITSSKFSVI
Specificity	Recombinant fusion protein containing a sequence corresponding to amino acids 1-100 of human SLC39A8 (NP_071437.3).

ADDITIONAL INFORMATION

Note STRICTLY FOR FURTHER SCIENTIFIC RESEARCH USE ONLY (RUO). MUST NOT TO BE USED IN DIAGNOSTIC OR THERAPEUTIC APPLICATIONS.



Western blot analysis of various lysates, using SLC39A8 antibody (STJ11104765) at 1:2000 dilution. Secondary antibody: HRP Goat Anti-Rabbit IgG (H+L) (STJS000856) at 1:10000 dilution. Lysates/proteins: 25 Mu g per lane. Blocking buffer: 3% nonfat dry milk in TBST. Detection: ECL Basic Kit. Exposure time: 90s.