

Anti-HADHA antibody (545-763 aa) (STJ11104762)

GENERAL INFORMATION

Product Type	Primary antibodies
Applications	WB/IHC-P/IF/ICC/ELISA
Host / Source	Rabbit
Reactivity	Human/Mouse

PRODUCT PROPERTIES

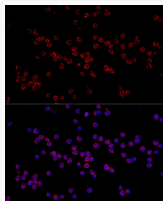
Clonality	Polyclonal
Concentration	Lot specific
Conjugation	Unconjugated
Purification	Affinity purification
Dilution Range	WB:1:500-1:1000 IHC-P:1:50-1:200 IF/ICC:1:50-1:200 ELISA:Recommended starting concentration is 1 µg/mL. Please optimize the concentration based on your specific assay requirements.
Formulation	PBS with 0.05% Proclin300, 50% Glycerol, pH 7.3.
Isotype	IgG
Molecular Weight	Protein Mw: 83kDa Observed Mw: 76kDa
Storage Instruction	Store at -20°C for up to 1 year from the date of receipt, and avoid repeat freeze-thaw cycles.

TARGET INFORMATION

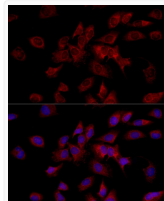
Gene ID	3030
Gene Symbol	HADHA
UniProt ID	ECHA_HUMAN
Immunogen Region	545-763 aa
Immunogen Sequence	FYTRCLAPMMSEVIRILQE GVDPKKLDSLTTSGFPPVGA ATLVDEVGVDAKHVAEDLG KVFGERFGGGNPELLTQMVS KGFLGRKSGKGFYIQEGVK RKDLNSDMDSILASLKLPPK SEVSSDEDIQFRLVTRFVNE AVMCLQEGILATPAEGDIGA VFGLGFPPCLGGPFRFVDLY GAQKIVDRLKKYEAAYGKQF TPCQLLADHANSPNKKFYQ
Specificity	Recombinant fusion protein containing a sequence corresponding to amino acids 545-763 of human HADHA (NP_000173.2).

ADDITIONAL INFORMATION

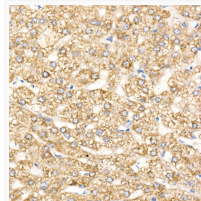
Note **STRICTLY FOR FURTHER SCIENTIFIC RESEARCH USE ONLY (RUO). MUST NOT TO BE USED IN DIAGNOSTIC OR THERAPEUTIC APPLICATIONS.**



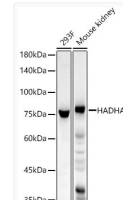
Immunofluorescence analysis of THP-1 cells using HADHA Rabbit polyclonal antibody (STJ11104762) at dilution of 1:50 (40x lens). Blue: DAPI for nuclear staining.



Immunofluorescence analysis of HeLa cells using HADHA Rabbit polyclonal antibody (STJ11104762) at dilution of 1:50 (40x lens). Blue: DAPI for nuclear staining.



Immunohistochemistry analysis of paraffin-embedded human liver cancer using HADHA Rabbit polyclonal antibody (STJ11104762) at dilution of 1:100 (40x lens). Perform high pressure antigen retrieval with 10 mM citrate buffer pH 6.0 before commencing with immunohistochemistry staining protocol.



Western blot analysis of various lysates, using HADHA antibody (STJ11104762) at 1:600 dilution. Secondary antibody: HRP Goat Anti-Rabbit IgG (H+L) (STJS000856) at 1:10000 dilution. Lysates/proteins: 25 µg per lane. Blocking buffer: 3% nonfat dry milk in TBST. Detection: ECL Basic Kit. Exposure time: 20s.