

Anti-TGFBR1 antibody (100-200) [S4734RM] (STJ11104734)

GENERAL INFORMATION

Product Type	Primary antibodies
Applications	WB/ELISA
Host / Source	Rabbit
Reactivity	Human

PRODUCT PROPERTIES

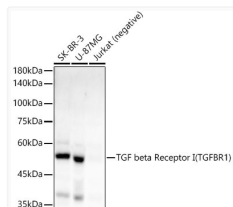
Clonality	Monoclonal
Concentration	Lot specific
Conjugation	Unconjugated
Purification	Affinity purification
Dilution Range	WB:1:2000-1:8000 ELISA:Recommended starting concentration is 1 Mu g/mL. Please optimize the concentration based on your specific assay requirements.
Formulation	PBS with 0.05% Proclin300, 0.05% BSA, 50% Glycerol, pH 7.3.
Isotype	IgG
Molecular Weight	Protein Mw: 56kDa Observed Mw: 56kDa
Storage Instruction	Store at -20°C for up to 1 year from the date of receipt, and avoid repeat freeze-thaw cycles.

TARGET INFORMATION

Gene ID	7046
Gene Symbol	TGFBRI
UniProt ID	TGFR1_HUMAN
Immunogen Region	100-200
Immunogen Sequence	CCNQDHCNKIPLPTTVKSSP GLGPVELAAVIAGPVCFVCI SLMLMVYICHNRTVIHHRVP NEEDPSLDRPFIFSEGTTLLKD LIYDMTTSGSGSGLPLLVQR T
Specificity	A synthetic peptide corresponding to a sequence within amino acids 100-200 of human TGF beta Receptor I (TGFBRI) (NP_004603.1).

ADDITIONAL INFORMATION

Note STRICTLY FOR FURTHER SCIENTIFIC RESEARCH USE ONLY (RUO). MUST NOT TO BE USED IN DIAGNOSTIC OR THERAPEUTIC APPLICATIONS.



Western blot analysis of extracts of various cell lines, using TGF beta Receptor I (TGFBRI) antibody (STJ11104734) at 1:2000 dilution. Secondary antibody: HRP Goat Anti-Rabbit IgG (H+L) (STJS000856) at 1:10000 dilution. Lysates/proteins: 25 Mu g per lane. Blocking buffer: 3% nonfat dry milk in TBST. Detection: ECL Basic Kit. Exposure time: 30s.