

Anti-P4HA2 antibody (157-333) [S4733RM] (STJ11104733)

GENERAL INFORMATION

Product Type	Primary antibodies
Applications	WB/ELISA
Host / Source	Rabbit
Reactivity	Human/Mouse/Rat

PRODUCT PROPERTIES

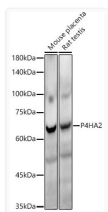
Clonality	Monoclonal
Concentration	Lot specific
Conjugation	Unconjugated
Purification	Affinity purification
Dilution Range	WB:1:2000-1:20000 ELISA:Recommended starting concentration is 1 Mu g/mL. Please optimize the concentration based on your specific assay requirements.
Formulation	PBS with 0.05% Proclin300, 0.05% BSA, 50% Glycerol, pH 7.3.
Isotype	IgG
Molecular Weight	Protein Mw: 61kDa Observed Mw: 61kDa
Storage Instruction	Store at -20°C for up to 1 year from the date of receipt, and avoid repeat freeze-thaw cycles.

TARGET INFORMATION

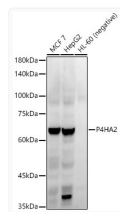
Gene ID	8974
Gene Symbol	P4HA2
UniProt ID	P4HA2_HUMAN
Immunogen Region	157-333
Immunogen Sequence	GTKYQAMLSVDDCFGMGRSA YNEGDYYHTVLWMEQVLKQL DAGEEATTTKSQVLDYLSYA VFQLGDLHRALELTRRLSL DPSHERAGGNLRYFEQLLEE EREKLTINQTEAELATPEGI YERPVDYLPERDVYESLCRG EGVKLTTPRRQKRLFCRYHHG NRAPQLLIAPFKEDEW
Specificity	Recombinant fusion protein containing a sequence corresponding to amino acids 157-333 of human P4HA2 (NP_004190.1).

ADDITIONAL INFORMATION

Note **STRICTLY FOR FURTHER SCIENTIFIC RESEARCH USE ONLY (RUO). MUST NOT TO BE USED IN DIAGNOSTIC OR THERAPEUTIC APPLICATIONS.**



Western blot analysis of various lysates, using P4HA2 antibody (STJ11104733) at 1:20000 dilution. Secondary antibody: HRP Goat Anti-Rabbit IgG (H+L) (STJS000856) at 1:10000 dilution. Lysates/proteins: 25 Mu g per lane. Blocking buffer: 3% nonfat dry milk in TBST. Detection: ECL Enhanced Kit. Exposure time: 180s.



Western blot analysis of various lysates, using P4HA2 antibody (STJ11104733) at 1:20000 dilution. Secondary antibody: HRP Goat Anti-Rabbit IgG (H+L) (STJS000856) at 1:10000 dilution. Lysates/proteins: 25 Mu g per lane. Blocking buffer: 3% nonfat dry milk in TBST. Detection: ECL Enhanced Kit. Exposure time: 60s.