

Anti-MYH7 antibody (1700-1800) [S4731RM] (STJ11104731)

GENERAL INFORMATION

Product Type	Primary antibodies
Applications	WB/ELISA
Host / Source	Rabbit
Reactivity	Human/Mouse/Rat

PRODUCT PROPERTIES

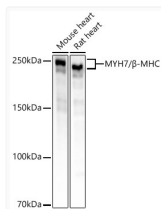
Clonality	Monoclonal
Concentration	Lot specific
Conjugation	Unconjugated
Purification	Affinity purification
Dilution Range	WB:1:2000-1:12000 ELISA:Recommended starting concentration is 1 µg/mL. Please optimize the concentration based on your specific assay requirements.
Formulation	PBS with 0.09% Sodium Azide, 0.05% BSA, 50% Glycerol, pH 7.3.
Isotype	IgG
Molecular Weight	Protein Mw: 223kDa Observed Mw: 220-230kDa
Storage Instruction	Store at -20°C for up to 1 year from the date of receipt, and avoid repeat freeze-thaw cycles.

TARGET INFORMATION

Gene ID	4625
Gene Symbol	MYH7
UniProt ID	MYH7_HUMAN
Immunogen Region	1700-1800
Immunogen Sequence	KLAEQELIETSERVQLLSQ NTSLINQKKKMDADLSQLQT EVEEAVQECRNAAEEKAKKAI TDAAMMAEELKKEQDTS AHL ERMKKNMEQTIKDLQHRLE A
Specificity	A synthetic peptide corresponding to a sequence within amino acids 1700-1800 of human MYH7/Beta-MHC (NP_000248.2).

ADDITIONAL INFORMATION

Note STRICTLY FOR FURTHER SCIENTIFIC RESEARCH USE ONLY (RUO). MUST NOT TO BE USED IN DIAGNOSTIC OR THERAPEUTIC APPLICATIONS.



Western blot analysis of various lysates, using MYH7/Beta-MHC antibody (STJ11104731) at 1:2000 dilution. Secondary antibody: HRP Goat Anti-Rabbit IgG (H+L) (STJS000856) at 1:10000 dilution. Lysates/proteins: 25 µg per lane. Blocking buffer: 3% nonfat dry milk in TBST. Detection: ECL Basic Kit. Exposure time: 4s.