

## Anti-CFD antibody (26-253 aa) (STJ11104715)

### GENERAL INFORMATION

Product Type	Primary antibodies
Applications	WB/ELISA
Host / Source	Rabbit
Reactivity	Human

### PRODUCT PROPERTIES

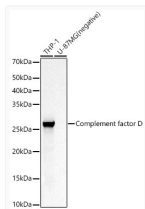
Clonality	Polyclonal
Concentration	Lot specific
Conjugation	Unconjugated
Purification	Affinity purification
Dilution Range	WB:1:100-1:500 ELISA:Recommended starting concentration is 1 $\mu$ g/mL. Please optimize the concentration based on your specific assay requirements.
Formulation	PBS with 0.05% Proclin300, 50% Glycerol, pH 7.3.
Isotype	IgG
Molecular Weight	Protein Mw: 27kDa Observed Mw: 27kDa
Storage Instruction	Store at -20°C for up to 1 year from the date of receipt, and avoid repeat freeze-thaw cycles.

### TARGET INFORMATION

Gene ID	<a href="#">1675</a>
Gene Symbol	<a href="#">CFD</a>
UniProt ID	<a href="#">CFAD_HUMAN</a>
Immunogen Region	26-253 aa
Immunogen Sequence	ILGGREAEAHARPYMASVQL NGAHLCCGGVLVAEQWVLSAA HCLEDAADGKVQVLLGAHSL SQPEPSKRLYDVLRAVPHPD SQPDTIDHLLLLQLSEKAT LGPAVRPLPWQRVDRDVAPG TLCDVAGWGI VNHAGRRPDS LQHVLLPVLDRA TCNRRTHH DGAITERLMCAESNRRDCK GDSGGPLVCGGVLEGGVVTSG SRVCGNRKKPGIYTRVASYA AWIDSVLA
Specificity	Recombinant fusion protein containing a sequence corresponding to amino acids 26-253 of human Complement factor D (NP_001919.2).

### ADDITIONAL INFORMATION

Note **STRICTLY FOR FURTHER SCIENTIFIC RESEARCH USE ONLY (RUO). MUST NOT TO BE USED IN DIAGNOSTIC OR THERAPEUTIC APPLICATIONS.**



Western blot analysis of various lysates, using ComplementfactorD antibody (STJ11104715) at 1:400 dilution. Secondary antibody: HRP Goat Anti-Rabbit IgG (H+L) (STJS000856) at 1:10000 dilution. Lysates/proteins: 25  $\mu$ g per lane. Blocking buffer: 3% nonfat dry milk in TBST. Detection: ECL Basic Kit. Exposure time: 45s.