

Anti-CCL17 antibody (450-550) (STJ11104710)

GENERAL INFORMATION

Product Type	Primary antibodies
Applications	WB/ELISA
Host / Source	Rabbit
Reactivity	Human

PRODUCT PROPERTIES

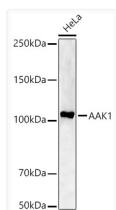
Clonality	Polyclonal
Concentration	Lot specific
Conjugation	Unconjugated
Purification	Affinity purification
Dilution Range	WB:1:500-1:1000 ELISA:Recommended starting concentration is 1 µg/mL. Please optimize the concentration based on your specific assay requirements.
Formulation	PBS with 0.05% Proclin300, 50% Glycerol, pH 7.3.
Isotype	IgG
Molecular Weight	Protein Mw: 11kDa Observed Mw: 104kDa
Storage Instruction	Store at -20°C for up to 1 year from the date of receipt, and avoid repeat freeze-thaw cycles.

TARGET INFORMATION

Gene ID	6361
Gene Symbol	CCL17
UniProt ID	CCL17_HUMAN
Immunogen Region	450-550
Immunogen Sequence	AQGLPAQAQATPQHQQQLFL KQQQQQQQPPPAQQQPAGTF YQQQQAQTTQQFQAVHPATQK PAIAQFPVVSQGGSSQQQLMQ NFYQQQQQQQQQQQQQLAT A
Specificity	A synthetic peptide corresponding to a sequence within amino acids 450-550 of human AAK1 (NP_055726.4).

ADDITIONAL INFORMATION

Note STRICTLY FOR FURTHER SCIENTIFIC RESEARCH USE ONLY (RUO). MUST NOT TO BE USED IN DIAGNOSTIC OR THERAPEUTIC APPLICATIONS.



Western blot analysis of HeLa, using AAK1 Rabbit polyclonal antibody (STJ11104710) at 1:1000 dilution. Secondary antibody: HRP Goat Anti-Rabbit IgG (H+L) (STJS000856) at 1:10000 dilution. Lysates/proteins: 25µg per lane. Blocking buffer: 3% nonfat dry milk in TBST. Detection: ECL Enhanced Kit. Exposure time: 90s.