

Anti-VSNL1 antibody (2-191) [S4707RM] (STJ11104707)

GENERAL INFORMATION

Product Type	Primary antibodies
Applications	WB/ELISA
Host / Source	Rabbit
Reactivity	Human/Mouse/Rat

PRODUCT PROPERTIES

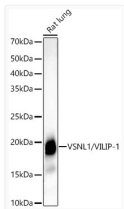
Clonality	Monoclonal
Concentration	Lot specific
Conjugation	Unconjugated
Purification	Affinity purification
Dilution Range	WB:1:1000-1:5000 ELISA:Recommended starting concentration is 1 Mu g/mL. Please optimize the concentration based on your specific assay requirements.
Formulation	PBS with 0.05% Proclin300, 0.05% BSA, 50% Glycerol, pH 7.3.
Isotype	IgG
Molecular Weight	Protein Mw: 22kDa Observed Mw: 18kDa
Storage Instruction	Store at -20°C for up to 1 year from the date of receipt, and avoid repeat freeze-thaw cycles.

TARGET INFORMATION

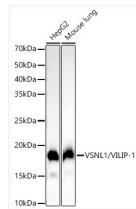
Gene ID	7447
Gene Symbol	VSNL1
UniProt ID	VLS1_HUMAN
Immunogen Region	2-191
Immunogen Sequence	GKQNSKLAPEVMEDLVKSTE FNEHELKQWYKGFKDCPSG RLNLEEFQQLYVKFFPYGDA SKFAQHAFRTFDKNGDGTID FREFICALSITSRGSFEQKL NWFNMYDLGDGKITRVEM LEIIEAIYKMVGTVIMMKMN EDGLTPEQRVDKIFSKMDKN KDDQITLDEFKEAAKSDPSI VLLQCIDIQK
Specificity	Recombinant fusion protein containing a sequence corresponding to amino acids 2-191 of human VSNL1/VILIP-1 (NP_003376.2).

ADDITIONAL INFORMATION

Note **STRICTLY FOR FURTHER SCIENTIFIC RESEARCH USE ONLY (RUO). MUST NOT TO BE USED IN DIAGNOSTIC OR THERAPEUTIC APPLICATIONS.**



Western blot analysis of extracts of various cell lines, using VSNL1/VILIP-1 antibody (STJ11104707) at 1:2000 dilution. Secondary antibody: HRP Goat Anti-Rabbit IgG (H+L) (STJS000856) at 1:10000 dilution. Lysates/proteins: 25 Mu g per lane. Blocking buffer: 3% nonfat dry milk in TBST. Detection: ECL Basic Kit. Exposure time: 30s.



Western blot analysis of extracts of various cell lines, using VSNL1/VILIP-1 antibody (STJ11104707) at 1:2000 dilution. Secondary antibody: HRP Goat Anti-Rabbit IgG (H+L) (STJS000856) at 1:10000 dilution. Lysates/proteins: 25 Mu g per lane. Blocking buffer: 3% nonfat dry milk in TBST. Detection: ECL Basic Kit. Exposure time: 10s.