

Anti-PPM1A antibody (1-382) [S4695RM] (STJ11104695)

GENERAL INFORMATION

Product Type	Primary antibodies
Applications	WB/ELISA
Host / Source	Rabbit
Reactivity	Human

PRODUCT PROPERTIES

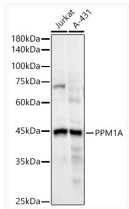
Clonality	Monoclonal
Concentration	Lot specific
Conjugation	Unconjugated
Purification	Affinity purification
Dilution Range	WB:1:2000-1:20000 ELISA:Recommended starting concentration is 1 Mu g/mL. Please optimize the concentration based on your specific assay requirements.
Formulation	PBS with 0.05% Proclin300, 0.05% BSA, 50% Glycerol, pH 7.3.
Isotype	IgG
Molecular Weight	Protein Mw: 42kDa Observed Mw: 43kDa
Storage Instruction	Store at -20°C for up to 1 year from the date of receipt, and avoid repeat freeze-thaw cycles.

TARGET INFORMATION

Gene ID	5494
Gene Symbol	PPM1A
UniProt ID	PPM1A_HUMAN
Immunogen Region	1-382
Immunogen Sequence	MGAFLDKPKMEKHNAQQQGN GLRYGLSSMQGWVEMEDAH TAVIGLPSGLESWSFFAVYD GHAGSQVAKYCCEHLLDHT NNQDFKGSAGAPSVENVKNG IRTGFLEIDEHMRVMSEKKH GADRSRGSTAVGVLISSPQHTY FINCGDSRGLLCRNRKVHFF TQDHPKSNPLEKERIQNAGG SVMIQRVNGSLAVSRALGDF DYKCVHVGKGPTEQLVSPEPE VHDIERSEDDQFILLACD
Specificity	Recombinant fusion protein containing a sequence corresponding to amino acids 1-382 of human PPM1A (NP_066283.1).

ADDITIONAL INFORMATION

Note **STRICTLY FOR FURTHER SCIENTIFIC RESEARCH USE ONLY (RUO). MUST NOT TO BE USED IN DIAGNOSTIC OR THERAPEUTIC APPLICATIONS.**



Western blot analysis of extracts of various cell lines, using PPM1A antibody (STJ11104695) at 1:20000 dilution. Secondary antibody: HRP Goat Anti-Rabbit IgG (H+L) (STJS000856) at 1:10000 dilution. Lysates/proteins: 25 Mu g per lane. Blocking buffer: 3% nonfat dry milk in TBST. Detection: ECL Enhanced Kit. Exposure time: 90s.