

## Anti-CHEK1 antibody (250-350) [S4686RM] (STJ11104686)

### GENERAL INFORMATION

Product Type	Primary antibodies
Applications	WB/ELISA
Host / Source	Rabbit
Reactivity	Human

### PRODUCT PROPERTIES

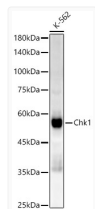
Clonality	Monoclonal
Concentration	Lot specific
Conjugation	Unconjugated
Purification	Affinity purification
Dilution Range	WB:1:2000-1:20000 ELISA:Recommended starting concentration is 1 Mu g/mL. Please optimize the concentration based on your specific assay requirements.
Formulation	PBS with 0.05% Proclin300, 0.05% BSA, 50% Glycerol, pH 7.3.
Isotype	IgG
Molecular Weight	Protein Mw: 54kDa Observed Mw: 56kDa
Storage Instruction	Store at-20°C for up to 1 year from the date of receipt, and avoid repeat freeze-thaw cycles.

### TARGET INFORMATION

Gene ID	<a href="#">1111</a>
Gene Symbol	<a href="#">CHEK1</a>
UniProt ID	<a href="#">CHK1_HUMAN</a>
Immunogen Region	250-350
Immunogen Sequence	PSARITIPDIKKDRWYNKPL KKGAKRPRVTSGGVSESPSG FSKHIQSNLDFSPVNSASSE ENVKYSSSQPEPRTGLSLWD TSPSYIDKLVQGISFSQPTC P
Specificity	A synthetic peptide corresponding to a sequence within amino acids 250-350 of human Chk1 (NP_001107593.1).

### ADDITIONAL INFORMATION

Note **STRICTLY FOR FURTHER SCIENTIFIC RESEARCH USE ONLY (RUO). MUST NOT TO BE USED IN DIAGNOSTIC OR THERAPEUTIC APPLICATIONS.**



Western blot analysis of extracts of K-562 cells, using Chk1 antibody (STJ11104686) at 1:10000 dilution. Secondary antibody: HRP Goat Anti-Rabbit IgG (H+L) (STJS000856) at 1:10000 dilution. Lysates/proteins: 25 Mu g per lane. Blocking buffer: 3% nonfat dry milk in TBST. Detection: ECL Enhanced Kit. Exposure time: 60s.