

Anti-IL2RG antibody (250-350) [S4677RM] (STJ11104677)

GENERAL INFORMATION

Product Type	Primary antibodies
Applications	WB/ELISA
Host / Source	Rabbit
Reactivity	Human/Mouse

PRODUCT PROPERTIES

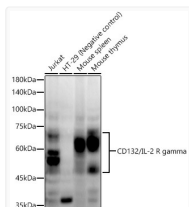
Clonality	Monoclonal
Concentration	Lot specific
Conjugation	Unconjugated
Purification	Affinity purification
Dilution Range	WB:1:1000-1:5000 ELISA:Recommended starting concentration is 1 µg/mL. Please optimize the concentration based on your specific assay requirements.
Formulation	PBS with 0.05% Proclin300, 0.05% BSA, 50% Glycerol, pH 7.3.
Isotype	IgG
Molecular Weight	Protein Mw: 42kDa Observed Mw: 50-70kDa
Storage Instruction	Store at -20°C for up to 1 year from the date of receipt, and avoid repeat freeze-thaw cycles.

TARGET INFORMATION

Gene ID	3561
Gene Symbol	IL2RG
UniProt ID	IL2RG_HUMAN
Immunogen Region	250-350
Immunogen Sequence	TSKENPFLFALEAVVISVGS MGLIISLLCVYFWLERTMPR IPTLKNLEDLVTEYHGNFSA WSGVSKGLAESLQPDYSERL CLVSEIPPCKGGALGEGPGAS P
Specificity	A synthetic peptide corresponding to a sequence within amino acids 250-350 of human CD132/IL-2 R gamma (NP_000197.1).

ADDITIONAL INFORMATION

Note STRICTLY FOR FURTHER SCIENTIFIC RESEARCH USE ONLY (RUO). MUST NOT TO BE USED IN DIAGNOSTIC OR THERAPEUTIC APPLICATIONS.



Western blot analysis of extracts of various cell lines, using CD132/IL-2 R gamma antibody (STJ11104677) at 1:2000 dilution. Secondary antibody: HRP Goat Anti-Rabbit IgG (H+L) (STJS000856) at 1:10000 dilution. Lysates/proteins: 25 µg per lane. Blocking buffer: 3% nonfat dry milk in TBST. Detection: ECL Enhanced Kit. Exposure time: 60s.