

Anti-INTS11 antibody (331-600) (STJ11104674)

GENERAL INFORMATION

Product Type	Primary antibodies
Applications	WB/ELISA
Host / Source	Rabbit
Reactivity	Human/Mouse/Rat

PRODUCT PROPERTIES

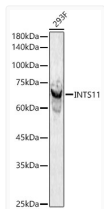
Clonality	Polyclonal
Concentration	Lot specific
Conjugation	Unconjugated
Purification	Affinity purification
Dilution Range	WB:1:100-1:500 ELISA:Recommended starting concentration is 1 µg/mL. Please optimize the concentration based on your specific assay requirements.
Formulation	PBS with 0.05% Proclin300, 50% Glycerol, pH 7.3.
Isotype	IgG
Molecular Weight	Protein Mw: 68kDa Observed Mw: 68kDa
Storage Instruction	Store at -20°C for up to 1 year from the date of receipt, and avoid repeat freeze-thaw cycles.

TARGET INFORMATION

Gene ID	54973
Gene Symbol	INTS11
UniProt ID	INT11_HUMAN
Immunogen Region	331-600
Immunogen Sequence	GQSLQIFRKWAGNEKNMVM PGYCVQGTVGHKILSGQRKL EMEGRQVLEVKMQVEYMSFS AHADAKGIMQLVGQAEPESV LLVHGAEAKKMEFLKQKIEQ LRVNICYMPANGETVTLPTSP SIPVGISLGLLKREMAQGLL PEAKKPRLLHGTLMKDSNF RLVSEQALKELGLAEHQLR FTCRVHLHDTRKEQETALRV YSHLKSVLKDHCVQHLPDGS VTVESVLLQAAAPSEDPGT
Specificity	Recombinant fusion protein containing a sequence corresponding to amino acids 331-600 of human INTS11 (NP_060341.2).

ADDITIONAL INFORMATION

Note STRICTLY FOR FURTHER SCIENTIFIC RESEARCH USE ONLY (RUO). MUST NOT TO BE USED IN DIAGNOSTIC OR THERAPEUTIC APPLICATIONS.



Western blot analysis of extracts of 293F cells, using INTS11 antibody (STJ11104674) at 1:400 dilution. Secondary antibody: HRP Goat Anti-Rabbit IgG (H+L) (STJS000856) at 1:10000 dilution. Lysates/proteins: 25 µg per lane. Blocking buffer: 3% nonfat dry milk in TBST. Detection: ECL Basic Kit. Exposure time: 180s.