

Anti-PRKAG1 antibody (100-200) (STJ11104668)

GENERAL INFORMATION

Product Type	Primary antibodies
Applications	WB/ELISA
Host / Source	Rabbit
Reactivity	Human/Mouse/Rat

PRODUCT PROPERTIES

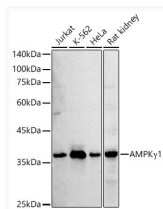
Clonality	Polyclonal
Concentration	Lot specific
Conjugation	Unconjugated
Purification	Affinity purification
Dilution Range	WB:1:100-1:500 ELISA:Recommended starting concentration is 1 Mu g/mL. Please optimize the concentration based on your specific assay requirements.
Formulation	PBS with 0.05% Proclin300, 50% Glycerol, pH 7.3.
Isotype	IgG
Molecular Weight	Protein Mw: 38kDa Observed Mw: 37kDa/
Storage Instruction	Store at-20°C for up to 1 year from the date of receipt, and avoid repeat freeze-thaw cycles.

TARGET INFORMATION

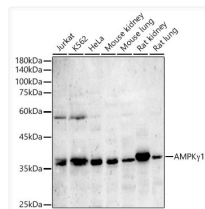
Gene ID	5571
Gene Symbol	PRKAG1
UniProt ID	AAKG1_HUMAN
Immunogen Region	100-200
Immunogen Sequence	KSALVQIYELEEHKIIETWRE VYLQDSFKPLVCISPNASLF DAVSSLIRNKIHRLPVIDPE SGNTLYILTHKRILKFLKLF ITEFPKPEFMSKSLEELQIG T
Specificity	A synthetic peptide corresponding to a sequence within amino acids 100-200 of human AMPK Gamma 1 (NP_002724.1).

ADDITIONAL INFORMATION

Note STRICTLY FOR FURTHER SCIENTIFIC RESEARCH USE ONLY (RUO). MUST NOT TO BE USED IN DIAGNOSTIC OR THERAPEUTIC APPLICATIONS.



Western blot analysis of various lysates using AMPK Gamma 1 Rabbit polyclonal antibody (STJ11104668) at 1:500 dilution. Secondary antibody:HRP Goat Anti-Rabbit IgG (H+L) (STJS000856) at 1:10000 dilution. Lysates/proteins: 25 Mu g per lane. Blocking buffer: 3 % nonfat dry milk in TBST. Detection:ECL Basic Kit. Exposure time: 90s.



Western blot analysis of various lysates, using AMPK Gamma 1 Rabbit polyclonal antibody (STJ11104668) at 1:400 dilution. Secondary antibody: HRP Goat Anti-Rabbit IgG (H+L) (STJS000856) at 1:10000 dilution. Lysates/proteins: 25 Mu g per lane. Blocking buffer: 3% nonfat dry milk in TBST. Detection: ECL Basic Kit. Exposure time: 90s.