

Anti-SDHB antibody (29-280) (STJ11104664)

GENERAL INFORMATION

Product Type	Primary antibodies
Applications	WB/IHC-P/ELISA
Host / Source	Rabbit
Reactivity	Human/Mouse/Rat

PRODUCT PROPERTIES

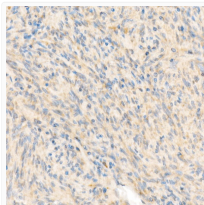
Clonality	Polyclonal
Concentration	Lot specific
Conjugation	Unconjugated
Purification	Affinity purification
Dilution Range	WB:1:500-1:1000 IHC-P:1:50-1:200 ELISA:Recommended starting concentration is 1 Mu g/mL. Please optimize the concentration based on your specific assay requirements.
Formulation	PBS with 0.05% Proclin300, 50% Glycerol, pH 7.3.
Isotype	IgG
Molecular Weight	Protein Mw: 32kDa Observed Mw: 32kDa
Storage Instruction	Store at -20°C for up to 1 year from the date of receipt, and avoid repeat freeze-thaw cycles.

TARGET INFORMATION

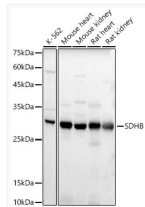
Gene ID	6390
Gene Symbol	SDHB
UniProt ID	SDHB_HUMAN
Immunogen Region	29-280
Immunogen Sequence	AQTAATAPRIKKFAIYRWD PDKAGDKPHMQTYEVDLNKC GPMVLDALIKIKNEVDSTLT FRRSREGICGSCAMNINGG NTLACTRRIDTNLNKVKSIY PLPHMYVIKDLVPLDSNFYA QYKSIEPYLKKKDESQEGKQ QYLSIEEREKLDGLYECIL CACCSTSCPSYWWNGDKYLG PAVLMQAYRWIMDSRDDFTE ERLAKLQDPFSLYRCHTIMN CTRTCPKGLNPGKAIAEIK
Specificity	Recombinant fusion protein containing a sequence corresponding to amino acids 29-280 of human SDHB (NP_002991.2).

ADDITIONAL INFORMATION

Note STRICTLY FOR FURTHER SCIENTIFIC RESEARCH USE ONLY (RUO). MUST NOT TO BE USED IN DIAGNOSTIC OR THERAPEUTIC APPLICATIONS.



Immunohistochemistry analysis of paraffin-embedded Human gastrointestinal stromal tumor using SDHB Rabbit polyclonal antibody (STJ11104664) at dilution of 1:50 (40x lens). Perform high pressure antigen retrieval with 10 mM Tris/EDTA buffer pH 9.0 before commencing with immunohistochemistry staining protocol.



Western blot analysis of extracts of various cell lines, using SDHB antibody (STJ11104664) at 1:400 dilution. Secondary antibody: HRP Goat Anti-Rabbit IgG (H+L) (STJS000856) at 1:10000 dilution. Lysates/proteins: 25 Mu g per lane. Blocking buffer: 3% nonfat dry milk in TBST. Detection: ECL Basic Kit. Exposure time: 0.5s.