

Anti-MIF antibody (2-115) (STJ11104658)

GENERAL INFORMATION

Product Type	Primary antibodies
Applications	WB/IF/ICC/ELISA
Host / Source	Rabbit
Reactivity	Human/Mouse/Rat

PRODUCT PROPERTIES

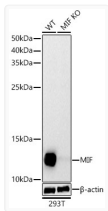
Clonality	Polyclonal
Concentration	Lot specific
Conjugation	Unconjugated
Purification	Affinity purification
Dilution Range	WB:1:500-1:1000 IF/CC:1:50-1:200 ELISA:Recommended starting concentration is 1 Mu g/mL. Please optimize the concentration based on your specific assay requirements.
Formulation	PBS with 0.05% Proclin300, 50% Glycerol, pH 7.3.
Isotype	IgG
Molecular Weight	Protein Mw: 12kDa Observed Mw: 12kDa
Storage Instruction	Store at -20°C for up to 1 year from the date of receipt, and avoid repeat freeze-thaw cycles.

TARGET INFORMATION

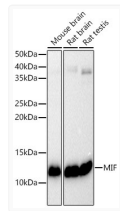
Gene ID	4282
Gene Symbol	MIF
UniProt ID	MIF_HUMAN
Immunogen Region	2-115
Immunogen Sequence	PMFIVNTNVPASVDPDGLS ELTQQLAQATGKPPQYIAVH VVPDQLMAFGGSSEPCALCS LHSIGKIGGAQNRYSKLLC GLLAERLRISPDVRYINYD MNAANVGWNNSTFA
Specificity	Recombinant fusion protein containing a sequence corresponding to amino acids 2-115 of human MIF (NP_002406.1).

ADDITIONAL INFORMATION

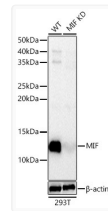
Note STRICTLY FOR FURTHER SCIENTIFIC RESEARCH USE ONLY (RUO). MUST NOT TO BE USED IN DIAGNOSTIC OR THERAPEUTIC APPLICATIONS.



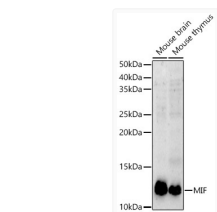
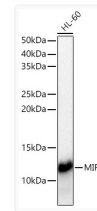
Western blot analysis of lysates from wild type (WT) and MIF Rabbit polyclonal antibody knockout (KO) 293T cells, using [KO Validated] MIF Rabbit polyclonal antibody (STJ11104658) at 1:400 dilution. Secondary antibody: HRP Goat Anti-Rabbit IgG (H+L) (STJS000856) at 1:10000 dilution. Lysates/proteins: 25 Mu g per lane. Blocking buffer: 3% nonfat dry milk in TBST. Detection: ECL Basic Kit. Exposure time: 10s.



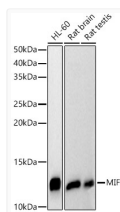
Western blot analysis of various lysates using [KO Validated] MIF Rabbit polyclonal antibody (STJ11104658) at 1:500 dilution. Secondary antibody:HRP Goat Anti-Rabbit IgG (H+L) (STJS000856) at 1:10000 dilution. Lysates/proteins: 25 Mu g per lane. Blocking buffer: 3 % nonfat dry milk in TBST. Detection:ECL Basic Kit. Exposuretime: 10s.



Western blot analysis of lysates from wild type (WT) and MIF knockdown (KD) 293T cells using [KO Validated] MIF Rabbit polyclonal antibody (STJ11104658) at 1:500 dilution. Secondary antibody:HRP Goat Anti-Rabbit IgG (H+L) (STJS000856) at 1:10000 dilution. Lysates/proteins: 25 Mu g per lane. Blocking buffer: 3% nonfat dry milk in TBST. Detection:ECL Basic Kit. Exposureretime: 0. 3s.



Western blot analysis of lysates from HL-60 cells using [KO Validated] MIF Rabbit polyclonal antibody (STJ11104658) at 1:500 dilution. Secondary antibody:HRP Goat Anti-Rabbit IgG (H+L) (STJS000856) at 1:10000 dilution. Lysates/proteins: 25 Mu g per lane. Blocking buffer: 3% nonfat dry milk in TBST. Detection:ECL Basic Kit. Exposuretime:0. 3s.



Western blot analysis of various lysates, using [KO Validated] MIF Rabbit polyclonal antibody (STJ11104658) at 1:400 dilution. Secondary antibody: HRP Goat Anti-Rabbit IgG (H+L) (STJS000856) at 1:10000 dilution. Lysates/proteins: 25 Mu g per lane. Blocking buffer: 3% nonfat dry milk in TBST. Detection: ECL Basic Kit. Exposure time: 10s.