

## Anti-FUNDC1 antibody (50-155) (STJ11104646)

### GENERAL INFORMATION

Product Type	Primary antibodies
Applications	WB/ELISA
Host / Source	Rabbit
Reactivity	Human

### PRODUCT PROPERTIES

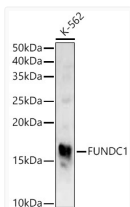
Clonality	Polyclonal
Concentration	Lot specific
Conjugation	Unconjugated
Purification	Affinity purification
Dilution Range	WB:1:500-1:1000 ELISA:Recommended starting concentration is 1 Mu g/mL. Please optimize the concentration based on your specific assay requirements.
Formulation	PBS with 0.05% Proclin300, 50% Glycerol, pH 7.3.
Isotype	IgG
Molecular Weight	Protein Mw: 17kDa Observed Mw: 17kDa
Storage Instruction	Store at -20°C for up to 1 year from the date of receipt, and avoid repeat freeze-thaw cycles.

### TARGET INFORMATION

Gene ID	<a href="#">139341</a>
Gene Symbol	<a href="#">FUNDC1</a>
UniProt ID	<a href="#">FUND1_HUMAN</a>
Immunogen Region	50-155
Immunogen Sequence	VATQIVMGGVTGWCAGFLFQ KVGKLAATAVGGGFLLLQIA SHSGYVQIDWKRVEKDVNKA KRQIKRANKAAPEINLLIE EATEFIKQNVISSGFVGGF LLGLAS
Specificity	A synthetic peptide corresponding to a sequence within amino acids 50-155 of human FUNDC1 (NP_776155.1).

### ADDITIONAL INFORMATION

Note STRICTLY FOR FURTHER SCIENTIFIC RESEARCH USE ONLY (RUO). MUST NOT TO BE USED IN DIAGNOSTIC OR THERAPEUTIC APPLICATIONS.



Western blot analysis of extracts of K-562 cells, using FUNDC1 antibody (STJ11104646) at 1:1000 dilution. Secondary antibody: HRP Goat Anti-Rabbit IgG (H+L) (STJS000856) at 1:10000 dilution. Lysates/proteins: 25 Mu g per lane. Blocking buffer: 3% nonfat dry milk in TBST. Detection: ECL Basic Kit. Exposure time: 30s.