

Anti-CCL2 antibody (22-99) (STJ11104637)

GENERAL INFORMATION

Product Type	Primary antibodies
Applications	WB/ELISA
Host / Source	Rabbit
Reactivity	Human

PRODUCT PROPERTIES

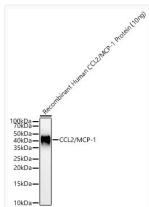
Clonality	Polyclonal
Concentration	Lot specific
Conjugation	Unconjugated
Purification	Affinity purification
Dilution Range	WB:1:500-1:1000 ELISA:Recommended starting concentration is 1 µg/mL. Please optimize the concentration based on your specific assay requirements.
Formulation	PBS with 0.09% Sodium Azide, 50% Glycerol, pH7.3.
Isotype	IgG
Molecular Weight	Protein Mw: 11kDa Observed Mw: 35-40kDa
Storage Instruction	Store at -20°C for up to 1 year from the date of receipt, and avoid repeat freeze-thaw cycles.

TARGET INFORMATION

Gene ID	6347
Gene Symbol	CCL2
UniProt ID	CCL2_HUMAN
Immunogen Region	22-99
Immunogen Sequence	LAQPDAINAPVTCCYNFTNR KISVQRLASYRRITSSKCPK EAVIFKTIVAKEICADPKQK WVQDSMDHLDKQTQTPKT
Specificity	Recombinant fusion protein containing a sequence corresponding to amino acids 22-99 of human CCL2/MCP-1 (NP_002973.1).

ADDITIONAL INFORMATION

Note STRICTLY FOR FURTHER SCIENTIFIC RESEARCH USE ONLY (RUO). MUST NOT TO BE USED IN DIAGNOSTIC OR THERAPEUTIC APPLICATIONS.



Western blot analysis of recombinant Human CCL2/MCP-1 Protein, using CCL2/MCP-1 Rabbit polyclonal antibody (STJ11104637) at 1:1000 dilution. Secondary antibody: HRP Goat Anti-Rabbit IgG (H+L) (STJS000856) at 1:10000 dilution. Lysates/proteins: 10ng per lane. Blocking buffer: 3% nonfat dry milk in TBST. Detection: ECL Basic Kit. Exposure time: 10s.