

Anti-AP2A2 antibody (590-939) [S4629RM] (STJ11104629)

GENERAL INFORMATION

Product Type	Primary antibodies
Applications	WB/ELISA
Host / Source	Rabbit
Reactivity	Human/Mouse

PRODUCT PROPERTIES

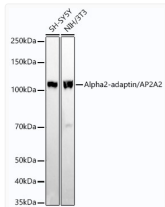
Clonality	Monoclonal
Concentration	Lot specific
Conjugation	Unconjugated
Purification	Affinity purification
Dilution Range	WB:1:2000-1:20000 ELISA:Recommended starting concentration is 1 μ g/mL. Please optimize the concentration based on your specific assay requirements.
Formulation	PBS with 0.05% Proclin300, 0.05% BSA, 50% Glycerol, pH 7.3.
Isotype	IgG
Molecular Weight	Protein Mw: 104kDa Observed Mw: 104kDa
Storage Instruction	Store at -20°C for up to 1 year from the date of receipt, and avoid repeat freeze-thaw cycles.

TARGET INFORMATION

Gene ID	161
Gene Symbol	AP2A2
UniProt ID	AP2A2_HUMAN
Immunogen Region	590-939
Immunogen Sequence	STDILATVLEEMPPFERES SILAKLKKKGPSTVTDLED TKRDRSVDVNGGPEPAPAST SAVSTPSPSADLLGLGAAPP APAGPPPSSGGSGLLVDVFS DSASVVAPLAPGSEDNFARF VCKNNGVLFENQLLQIGLKS EFRQNLGRMFIFYGNKTSTQ FLNFTPTLICSDDLQPNNLNL QTKPVDPTVEGGAQQVVN IECVSDFTEAPVLIQFRYG GTFQNVSVQLPITLNKFFQ
Specificity	Recombinant fusion protein containing a sequence corresponding to amino acids 590-939 of human Alpha2-adaptin/AP2A2 (NP_036437.1).

ADDITIONAL INFORMATION

Note **STRICTLY FOR FURTHER SCIENTIFIC RESEARCH USE ONLY (RUO). MUST NOT TO BE USED IN DIAGNOSTIC OR THERAPEUTIC APPLICATIONS.**



Western blot analysis of extracts of various cell lines, using Alpha2-adaptin/AP2A2 antibody (STJ11104629) at 1:20000 dilution. Secondary antibody: HRP Goat Anti-Rabbit IgG (H+L) (STJS000856) at 1:10000 dilution. Lysates/proteins: 25 μ g per lane. Blocking buffer: 3% nonfat dry milk in TBST. Detection: ECL Basic Kit. Exposure time: 180s.