

## Anti-MAPK3 antibody (200-300) [S4626RM] (STJ11104626)

### GENERAL INFORMATION

Product Type	Primary antibodies
Applications	WB/IF/ICC/ELISA
Host / Source	Rabbit
Reactivity	Rat

### PRODUCT PROPERTIES

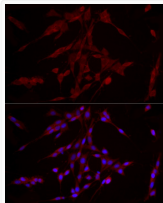
Clonality	Monoclonal
Concentration	Lot specific
Conjugation	Unconjugated
Purification	Affinity purification
Dilution Range	WB:1:10000-1:30000 IF/CC:1:50-1:200 ELISA:Recommended starting concentration is 1 $\mu$ g/mL. Please optimize the concentration based on your specific assay requirements.
Formulation	PBS with 0.05% Proclin300, 0.05% BSA, 50% Glycerol, pH 7.3.
Isotype	IgG
Molecular Weight	Protein Mw: 43kDa Observed Mw: 44kDa
Storage Instruction	Store at -20°C for up to 1 year from the date of receipt, and avoid repeat freeze-thaw cycles.

### TARGET INFORMATION

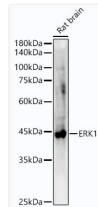
Gene ID	<a href="#">5595</a>
Gene Symbol	<a href="#">MAPK3</a>
UniProt ID	<a href="#">MK03_HUMAN</a>
Immunogen Region	200-300
Immunogen Sequence	FLTEYVATRWYRAPEIMLNS KGYTKSIDIWVSGCILAEML SNRPFPKGKHYLDQLNHILG ILGSPSQEDLNCIINMKARN YLQSLPSKTKVAWAKLFPKS D/LNSKGYTKSIDIWVSGCI LAEMLSNRPFPKGKHYLDQL NHILGILGSPSQEDLNCIIN LKARNYLLSLPHKNKVPWNR LFPNADSKALDLLDKMLTFN PHK
Specificity	A synthetic peptide corresponding to a sequence within amino acids 200-300 of human ERK1/ERK2 (P27361/P28482).

### ADDITIONAL INFORMATION

Note STRICTLY FOR FURTHER SCIENTIFIC RESEARCH USE ONLY (RUO). MUST NOT TO BE USED IN DIAGNOSTIC OR THERAPEUTIC APPLICATIONS.



Immunofluorescence analysis of PC-12 using ERK1 Rabbit monoclonal antibody (STJ11104626) at dilution of 1:200 (40x lens). Blue: DAPI for nuclear staining.



Western blot analysis of extracts of Rat brain, using ERK1 antibody (STJ11104626) at 1:10000 dilution. Secondary antibody: HRP Goat Anti-Rabbit IgG (H+L) (STJS000856) at 1:10000 dilution. Lysates/proteins: 25  $\mu$ g per lane. Blocking buffer: 3% nonfat dry milk in TBST. Detection: ECL Basic Kit. Exposure time: 30s.