

## Anti-SERPINA1 antibody (25-418) [S4624RM] (STJ11104624)

### GENERAL INFORMATION

Product Type	Primary antibodies
Applications	IF/ICC/ELISA
Host / Source	Rabbit
Reactivity	Human

### PRODUCT PROPERTIES

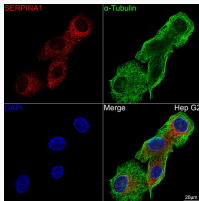
Clonality	Monoclonal
Concentration	Lot specific
Conjugation	Unconjugated
Purification	Affinity purification
Dilution Range	IF/ICC:1:50-1:200 ELISA:Recommended starting concentration is 1 µg/mL. Please optimize the concentration based on your specific assay requirements.
Formulation	PBS with 0.05% Proclin300, 0.05% BSA, 50% Glycerol, pH 7.3.
Isotype	IgG
Molecular Weight	Protein Mw: 47kDa Observed Mw: Refer to figures
Storage Instruction	Store at -20°C for up to 1 year from the date of receipt, and avoid repeat freeze-thaw cycles.

### TARGET INFORMATION

Gene ID	<a href="#">5265</a>
Gene Symbol	<a href="#">SERPINA1</a>
UniProt ID	<a href="#">A1AT_HUMAN</a>
Immunogen Region	25-418
Immunogen Sequence	EDPQGDAQAQKTDTSHHDDQDH PTFNKITPNLAEFASFSLYRQ LAHQSNSTNIFFSPVSIATA FAMLSLGTKADTHDEILEGL NFNLTEIPEAQIHEGFQELL RTLNQPDSQLQLTTGNGLFL SEGLKLVKDFLEDVKKLYHS EAFTVNFQDTEEAQKQINDY VEKGTQGGKIVDLVKELDRDT VFALVNYIFFKGGKWERPFEV KDTEEDDFHVDQVTTVKVPM MKRLGMFNIQHCKKLSSWV
Specificity	Recombinant fusion protein containing a sequence corresponding to amino acids 25-418 of human Alpha-1 Antitrypsin (SERPINA1) (NP_000286.3).

### ADDITIONAL INFORMATION

Note **STRICTLY FOR FURTHER SCIENTIFIC RESEARCH USE ONLY (RUO). MUST NOT TO BE USED IN DIAGNOSTIC OR THERAPEUTIC APPLICATIONS.**



Confocal imaging of Hep G2 cells using Alpha-1 Antitrypsin (SERPINA1) Rabbit monoclonal antibody (STJ11104624, at dilution of 1:100) (Red). The cells were counterstained with Alpha-Tubulin Mouse monoclonal antibody (dilution 1:400) (Green). DAPI was used for nuclear staining (blue). Objective: 100x.