

Anti-CLDN1 antibody (112-211) [S4623RM] (STJ11104623)

GENERAL INFORMATION

Product Type	Primary antibodies
Applications	WB/ELISA
Host / Source	Rabbit
Reactivity	Human/Mouse/Rat

PRODUCT PROPERTIES

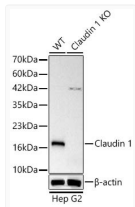
Clonality	Monoclonal
Concentration	Lot specific
Conjugation	Unconjugated
Purification	Affinity purification
Dilution Range	WB:1:1000-1:12000 ELISA:Recommended starting concentration is 1 Mu g/mL. Please optimize the concentration based on your specific assay requirements.
Formulation	PBS with 0.05% Proclin300, 0.05% BSA, 50% Glycerol, pH 7.3.
Isotype	IgG
Molecular Weight	Protein Mw: 23kDa Observed Mw: 20kDa
Storage Instruction	Store at -20°C for up to 1 year from the date of receipt, and avoid repeat freeze-thaw cycles.

TARGET INFORMATION

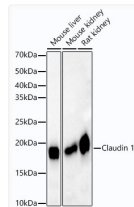
Gene ID	9076
Gene Symbol	CLDN1
UniProt ID	CLD1_HUMAN
Immunogen Region	112-211
Immunogen Sequence	EVQKMRMAVIGGAIFFLLAGL AILVATAWYGNRIVQEFYDP MTPVNARYEFGQALFTGWAA ASLCLLGALLCCSCPRKTT SYTPRPYPYKPPAPSSGKDYV
Specificity	A synthetic peptide corresponding to a sequence within amino acids 112-211 of human Claudin 1 (NP_066924.1).

ADDITIONAL INFORMATION

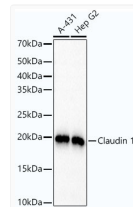
Note STRICTLY FOR FURTHER SCIENTIFIC RESEARCH USE ONLY (RUO). MUST NOT TO BE USED IN DIAGNOSTIC OR THERAPEUTIC APPLICATIONS.



Western blot analysis of lysates from wild type (WT) and Claudin 1 Rabbit monoclonal antibody knockdown (KD) Hep G2 (KO) , using [KO Validated] Claudin 1 Rabbit monoclonal antibody (STJ11104623) at 1:1000 dilution. Secondary antibody: HRP Goat Anti-Rabbit IgG (H+L) (STJS000856) at 1:10000 dilution. Lysates/proteins: 25ug per lane. Blocking buffer: 3% nonfat dry milk in TBST. Detection: ECL Basic Kit. Exposure time: 1s.



Western blot analysis of various lysates using [KO Validated] Claudin 1 Rabbit monoclonal antibody (STJ11104623) at 1:2000 dilution. Secondary antibody: HRP Goat Anti-Rabbit IgG (H+L) (STJS000856) at 1:10000 dilution. Lysates/proteins: 25 Mu g per lane. Blocking buffer: 3% nonfat dry milk in TBST. Detection: ECL Basic Kit. Exposure time: 30s.



Western blot analysis of various lysates using [KO Validated] Claudin 1 Rabbit monoclonal antibody (STJ11104623) at 1:2000 dilution. Secondary antibody: HRP Goat Anti-Rabbit IgG (H+L) (STJS000856) at 1:10000 dilution. Lysates/proteins: 25 Mu g per lane. Blocking buffer: 3% nonfat dry milk in TBST. Detection: ECL Basic Kit. Exposure time: 1s.