

## Anti-CEBPD antibody (50-150) [S4614RM] (STJ11104614)

### GENERAL INFORMATION

Product Type	Primary antibodies
Applications	WB/ELISA
Host / Source	Rabbit
Reactivity	Human/Mouse

### PRODUCT PROPERTIES

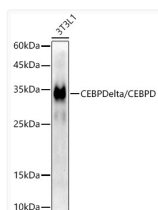
Clonality	Monoclonal
Concentration	Lot specific
Conjugation	Unconjugated
Purification	Affinity purification
Dilution Range	WB:1:10000-1:200000 ELISA:Recommended starting concentration is 1 Mu g/mL. Please optimize the concentration based on your specific assay requirements.
Formulation	PBS with 0.09% Sodium Azide, 0.05% BSA, 50% Glycerol, pH7.3.
Isotype	IgG
Molecular Weight	Protein Mw: 28kDa Observed Mw: 29kDa
Storage Instruction	Store at-20°C for up to 1 year from the date of receipt, and avoid repeat freeze-thaw cycles.

### TARGET INFORMATION

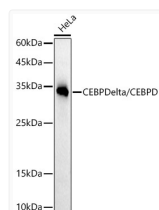
Gene ID	<a href="#">1052</a>
Gene Symbol	<a href="#">CEBPD</a>
UniProt ID	<a href="#">CEBPD_HUMAN</a>
Immunogen Region	50-150
Immunogen Sequence	PAMYDDESAIDFSAYIDSMA AVPTLELCHDELFDLNFNSN HKAGGAGPLELLPGGPARPL GPGPAAPRLLKREPDWGDGD APGSLPAQVAACAQTVVSL A
Specificity	A synthetic peptide corresponding to a sequence within amino acids 50-150 of human CEBP Delta/CEBPD (NP_005186.2).

### ADDITIONAL INFORMATION

Note **STRICTLY FOR FURTHER SCIENTIFIC RESEARCH USE ONLY (RUO). MUST NOT TO BE USED IN DIAGNOSTIC OR THERAPEUTIC APPLICATIONS.**



Western blot analysis of 3T3-L1 cells, using CEBPDelta/CEBPD antibody (STJ11104614) at 1:20000 dilution. Secondary antibody: HRP Goat Anti-Rabbit IgG (H+L) (STJS000856) at 1:10000 dilution. Lysates/proteins: 25 Mu g per lane. Blocking buffer: 3% nonfat dry milk in TBST. Detection: ECL Enhanced Kit. Exposure time: 180s.



Western blot analysis of HeLa cells, using CEBPDelta/CEBPD antibody (STJ11104614) at 1:20000 dilution. Secondary antibody: HRP Goat Anti-Rabbit IgG (H+L) (STJS000856) at 1:10000 dilution. Lysates/proteins: 25 Mu g per lane. Blocking buffer: 3% nonfat dry milk in TBST. Detection: ECL Basic Kit. Exposure time: 180s.