

Anti-BTRC antibody (1-100) [S4611RM] (STJ11104611)

GENERAL INFORMATION

Product Type	Primary antibodies
Applications	WB/IHC-P/ELISA
Host / Source	Rabbit
Reactivity	Human/Mouse/Rat

PRODUCT PROPERTIES

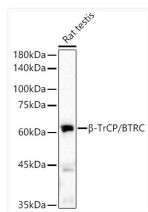
Clonality	Monoclonal
Concentration	Lot specific
Conjugation	Unconjugated
Purification	Affinity purification
Dilution Range	WB:1:500-1:1000 IHC-P:1:50-1:200 ELISA:Recommended starting concentration is 1 µg/mL. Please optimize the concentration based on your specific assay requirements.
Formulation	PBS with 0.05% Proclin300, 0.05% BSA, 50% Glycerol, pH 7.3.
Isotype	IgG
Molecular Weight	Protein Mw: 69kDa Observed Mw: 62kDa
Storage Instruction	Store at -20°C for up to 1 year from the date of receipt, and avoid repeat freeze-thaw cycles.

TARGET INFORMATION

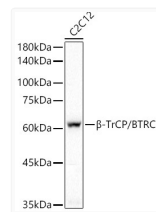
Gene ID	8945
Gene Symbol	BTRC
UniProt ID	FBW1A_HUMAN
Immunogen Region	1-100
Immunogen Sequence	MDPAEAVLQEKALKFMCSMP RSLWLGCSSLADSMPSLRCL YNPGTGALTAFAQNSSEREDC NNGEPPRKIIPEKNSLRQTY NSCARLCLNQETVCLASTAM
Specificity	A synthetic peptide corresponding to a sequence within amino acids 1-100 of human Beta-TrCP/BTRC (NP_378663.1).

ADDITIONAL INFORMATION

Note **STRICTLY FOR FURTHER SCIENTIFIC RESEARCH USE ONLY (RUO). MUST NOT TO BE USED IN DIAGNOSTIC OR THERAPEUTIC APPLICATIONS.**



Western blot analysis of extracts of Rat testis, using Beta-TrCP/BTRC Rabbit monoclonal antibody (STJ11104611) at 1:1000 dilution. Secondary antibody: HRP Goat Anti-Rabbit IgG (H+L) (STJS000856) at 1:10000 dilution. Lysates/proteins: 25 µg per lane. Blocking buffer: 3% nonfat dry milk in TBST. Detection: ECL Basic Kit. Exposure time: 30s.



Western blot analysis of extracts of C2C12 cells, using Beta-TrCP/BTRC Rabbit monoclonal antibody (STJ11104611) at 1:1000 dilution. Secondary antibody: HRP Goat Anti-Rabbit IgG (H+L) (STJS000856) at 1:10000 dilution. Lysates/proteins: 25 µg per lane. Blocking buffer: 3% nonfat dry milk in TBST. Detection: ECL Basic Kit. Exposure time: 1s.