

Anti-MPZ antibody (149-248) [S4607RM] (STJ11104607)

GENERAL INFORMATION

Product Type	Primary antibodies
Applications	WB/ELISA
Host / Source	Rabbit
Reactivity	Mouse/Rat

PRODUCT PROPERTIES

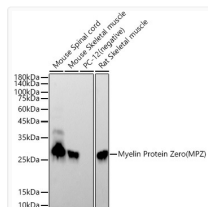
Clonality	Monoclonal
Concentration	Lot specific
Conjugation	Unconjugated
Purification	Affinity purification
Dilution Range	WB:1:2000-1:20000 ELISA:Recommended starting concentration is 1 Mu g/mL. Please optimize the concentration based on your specific assay requirements.
Formulation	PBS with 0.05% Proclin300, 0.05% BSA, 50% Glycerol, pH 7.3.
Isotype	IgG
Molecular Weight	Protein Mw: 28kDa Observed Mw: 28kDa
Storage Instruction	Store at -20°C for up to 1 year from the date of receipt, and avoid repeat freeze-thaw cycles.

TARGET INFORMATION

Gene ID	4359
Gene Symbol	MPZ
UniProt ID	MYPO_HUMAN
Immunogen Region	149-248
Immunogen Sequence	KVPTRYGVVLGAVIGGVLGV VLLLLLLFYVVRYCWLRRQA ALQRRLSAMEKGLHKPGKD ASKRGRQTPVLYAMLDSRS TKAVSEKKAKGLGESRKDKK
Specificity	A synthetic peptide corresponding to a sequence within amino acids 149-248 of human Myelin Protein Zero (MPZ) (NP_000521.2).

ADDITIONAL INFORMATION

Note **STRICTLY FOR FURTHER SCIENTIFIC RESEARCH USE ONLY (RUO). MUST NOT TO BE USED IN DIAGNOSTIC OR THERAPEUTIC APPLICATIONS.**



Western blot analysis of extracts of various cell lines, using Myelin Protein Zero (MPZ) antibody (STJ11104607) at 1:10000 dilution. Secondary antibody: HRP Goat Anti-Rabbit IgG (H+L) (STJS000856) at 1:10000 dilution. Lysates/proteins: 25 Mu g per lane. Blocking buffer: 3% nonfat dry milk in TBST. Detection: ECL Basic Kit. Exposure time: 60s.