

Anti-NLRP3 antibody (1-93) (STJ11104599)

GENERAL INFORMATION

Product Type	Primary antibodies
Applications	WB/IF/ICC/ELISA
Host / Source	Rabbit
Reactivity	Human/Mouse/Rat

PRODUCT PROPERTIES

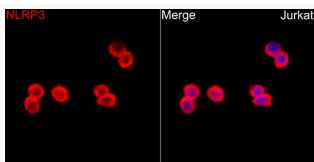
Clonality	Polyclonal
Concentration	Lot specific
Conjugation	Unconjugated
Purification	Affinity purification
Dilution Range	WB:1:1000-1:5000 IF/CC:1:50-1:200 ELISA:Recommended starting concentration is 1 Mu g/mL. Please optimize the concentration based on your specific assay requirements.
Formulation	PBS with 0.05% Proclin300, 50% Glycerol, pH 7.3.
Isotype	IgG
Molecular Weight	Protein Mw: 118kDa Observed Mw: 110kDa
Storage Instruction	Store at -20°C for up to 1 year from the date of receipt, and avoid repeat freeze-thaw cycles.

TARGET INFORMATION

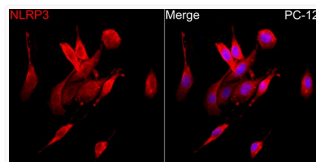
Gene ID	216799
Gene Symbol	Nlrp3
UniProt ID	NLRP3_MOUSE
Immunogen Region	1-93
Immunogen Sequence	MTSVRCKLAQYLEDLEDVDL KFKMHLEDYPPEKGCIPVP RGQMEKADHLDLATLMIDFN GEEKAWAMAVWIFAAINRRD LWEKAKKDQPEWN
Specificity	Recombinant fusion protein containing a sequence corresponding to amino acids 1-93 of mouse NLRP3 (NP_665826.1).

ADDITIONAL INFORMATION

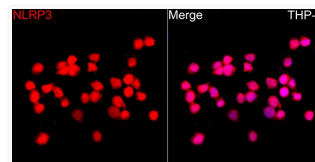
Note **STRICTLY FOR FURTHER SCIENTIFIC RESEARCH USE ONLY (RUO). MUST NOT TO BE USED IN DIAGNOSTIC OR THERAPEUTIC APPLICATIONS.**



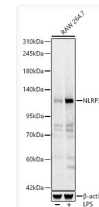
Immunofluorescence analysis of Jurkat cells using NLRP3 Rabbit polyclonal antibody (STJ11104599) at a dilution of 1:200 (40x lens). Secondary antibody: Cy3 Goat Anti-Rabbit IgG (H+L) at 1:500 dilution. Blue: DAPI for nuclear staining.



Immunofluorescence analysis of PC-12 cells using NLRP3 Rabbit polyclonal antibody (STJ11104599) at a dilution of 1:200 (40x lens). Secondary antibody: Cy3 Goat Anti-Rabbit IgG (H+L) at 1:500 dilution. Blue: DAPI for nuclear staining.



Immunofluorescence analysis of THP-1 cells using NLRP3 Rabbit polyclonal antibody (STJ11104599) at a dilution of 1:200 (40x lens). Secondary antibody: Cy3 Goat Anti-Rabbit IgG (H+L) at 1:500 dilution. Blue: DAPI for nuclear staining.



Western blot analysis of lysates from RAW 264.7 cells using NLRP3 Rabbit polyclonal antibody (STJ11104599) at 1:5000 dilution. Raw 264.7 cells were treated by LPS (1 Mu g/ml) at 37 °C for 8 hours. Secondary antibody: HRP Goat Anti-Rabbit IgG (H+L) (STJS000856) at 1:10000 dilution. Lysates/proteins: 25 Mu g per lane. Blocking buffer: 3% nonfat dry milk in TBST. Detection: ECL Basic Kit. Exposure time: 1s.