

Anti-RELA antibody (450-551) [S4596RM] (STJ11104596)

GENERAL INFORMATION

Product Type	Primary antibodies
Applications	IHC-P/ELISA
Host / Source	Rabbit
Reactivity	Human

PRODUCT PROPERTIES

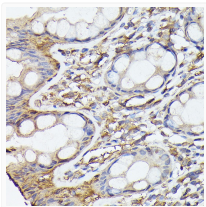
Clonality	Monoclonal
Concentration	Lot specific
Conjugation	Unconjugated
Purification	Affinity purification
Dilution Range	IHC-P:1:50-1:200 ELISA:Recommended starting concentration is 1 µg/mL. Please optimize the concentration based on your specific assay requirements.
Formulation	PBS with 0.05% Proclin300, 0.05% BSA, 50% Glycerol, pH 7.3.
Isotype	IgG
Molecular Weight	Protein Mw: 60kDa Observed Mw: Refer to figures
Storage Instruction	Store at -20°C for up to 1 year from the date of receipt, and avoid repeat freeze-thaw cycles.

TARGET INFORMATION

Gene ID	5970
Gene Symbol	RELA
UniProt ID	TF65_HUMAN
Immunogen Region	450-551
Immunogen Sequence	LGALLGNSTDPVFTDLASV DNSEFQQLNQGIPVAPHTT EPMLMEYPEAIRLVTGAQR PPDPAPAPLGAPGLPNGLLS GDEDFSSIADMDFSALLSQT SS
Specificity	A synthetic peptide corresponding to a sequence within amino acids 450-551 of human NF-κB p65/RelA (NP_068810.3).

ADDITIONAL INFORMATION

Note **STRICTLY FOR FURTHER SCIENTIFIC RESEARCH USE ONLY (RUO). MUST NOT TO BE USED IN DIAGNOSTIC OR THERAPEUTIC APPLICATIONS.**



Immunohistochemistry analysis of paraffin-embedded human colon using NF-κB p65/RelA Rabbit monoclonal antibody (STJ11104596) at dilution of 1:100 (40x lens). Perform high pressure antigen retrieval with 10 mM citrate buffer pH 6.0 before commencing with immunohistochemistry staining protocol.