

## Anti-ZMYND8 antibody (959-1188) (STJ11104587)

### GENERAL INFORMATION

Product Type	Primary antibodies
Applications	WB/IP/ELISA
Host / Source	Rabbit
Reactivity	Human/Mouse

### PRODUCT PROPERTIES

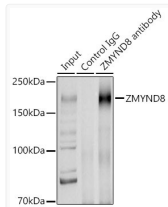
Clonality	Polyclonal
Concentration	Lot specific
Conjugation	Unconjugated
Purification	Affinity purification
Dilution Range	WB:1:500-1:2000 IP:0.5 Mu g-4 Mu g antibody for 200 Mu g-400 Mu g extracts of whole cells ELISA:Recommended starting concentration is 1 Mu g/mL. Please optimize the concentration based on your specific assay requirements.
Formulation	PBS with 0.02% Sodium Azide, 50% Glycerol, pH 7.3.
Isotype	IgG
Molecular Weight	Protein Mw: 132kDa Observed Mw: 165kDa
Storage Instruction	Store at -20°C for up to 1 year from the date of receipt, and avoid repeat freeze-thaw cycles.

### TARGET INFORMATION

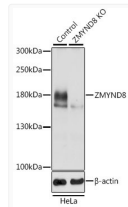
Gene ID	<a href="#">23613</a>
Gene Symbol	<a href="#">ZMYND8</a>
UniProt ID	<a href="#">ZMYD8_HUMAN</a>
Immunogen Region	959-1188
Immunogen Sequence	LELTMAEMRQSLQERDRLI AEVKKQLELEKQQAVDETKK KQWCANCKKEAIFYCCWNTS YCDYPCQQAHWPEHMKSCSTQ SATAPQAEADAENVNTETLNK SSQSSSSSTQSAPSETASAS KEKETSAEKSKESGSTLDLS GSRETSSILLGNSNQGVSVK RCDKQPAYAPTTTDHQPHPN YPAQKYHSRSNKSSWSSSDE KRGSTRSDHNTSTSKLLP KESRLDTFWD
Specificity	Recombinant fusion protein containing a sequence corresponding to amino acids 959-1188 of human ZMYND8 (NP_898868.1).

### ADDITIONAL INFORMATION

Note STRICTLY FOR FURTHER SCIENTIFIC RESEARCH USE ONLY (RUO). MUST NOT TO BE USED IN DIAGNOSTIC OR THERAPEUTIC APPLICATIONS.



Immunoprecipitation analysis of 300 Mu g extracts of U-87 cells using 3 Mu g [KO Validated] ZMYND8 Rabbit polyclonal antibody (STJ11104587). Western blot was performed from the immunoprecipitate using [KO Validated] ZMYND8 Rabbit polyclonal antibody (STJ11104587) at a dilution of 1:1000.



Western blot analysis of lysates from wild type (WT) and ZMYND8 knockout (KO) HeLa cells, using [KO Validated] ZMYND8 Rabbit polyclonal antibody (STJ11104587) at 1:3000 dilution. Secondary antibody: HRP Goat Anti-Rabbit IgG (H+L) (STJS000856) at 1:10000 dilution. Lysates/proteins: 25 Mu g per lane. Blocking buffer: 3% nonfat dry milk in TBST. Detection: ECL Basic Kit. Exposure time: 1s.