

Anti-B4GALT1 antibody (50-215) (STJ11104586)

GENERAL INFORMATION

Product Type	Primary antibodies
Applications	WB/ELISA
Host / Source	Rabbit
Reactivity	Human

PRODUCT PROPERTIES

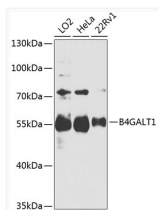
Clonality	Polyclonal
Concentration	Lot specific
Conjugation	Unconjugated
Purification	Affinity purification
Dilution Range	WB:1:500-1:2000 ELISA:Recommended starting concentration is 1 µg/mL. Please optimize the concentration based on your specific assay requirements.
Formulation	PBS with 0.02% Sodium Azide, 50% Glycerol, pH 7.3.
Isotype	IgG
Molecular Weight	Protein Mw: 44kDa Observed Mw: Refer to figures
Storage Instruction	Store at -20°C for up to 1 year from the date of receipt, and avoid repeat freeze-thaw cycles.

TARGET INFORMATION

Gene ID	2683
Gene Symbol	B4GALT1
UniProt ID	B4GT1_HUMAN
Immunogen Region	50-215
Immunogen Sequence	LPQLVGVSTPLQGGSNSAAA IGQSSGELRTGGARPPPLG ASSQPRPGGDSSPVVDSGPG PASNLTSVPVPHHTALSPLA CPEESPLLVGPMLEFNMPV DLELVAKQNPVVKMGGRYAP RDCVSPHKVAIIIPFRNRQE HLKYWLYLHPVLQRQQLDY GIYVIN
Specificity	Recombinant fusion protein containing a sequence corresponding to amino acids 50-215 of human B4GALT1 (NP_001488.2).

ADDITIONAL INFORMATION

Note STRICTLY FOR FURTHER SCIENTIFIC RESEARCH USE ONLY (RUO). MUST NOT TO BE USED IN DIAGNOSTIC OR THERAPEUTIC APPLICATIONS.



Western blot analysis of various lysates using B4GALT1 Rabbit polyclonal antibody (STJ11104586) at 1:1000 dilution. Secondary antibody: HRP Goat Anti-Rabbit IgG (H+L) (STJS000856) at 1:10000 dilution. Lysates/proteins: 25 µg per lane. Blocking buffer: 3% nonfat dry milk in TBST. Detection: ECL Enhanced Kit. Exposure time: 90s.