

Anti-AMOT antibody (1000-1084) (STJ11104583)

GENERAL INFORMATION

Product Type	Primary antibodies
Applications	WB/ELISA
Host / Source	Rabbit
Reactivity	Mouse/Rat

PRODUCT PROPERTIES

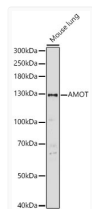
Clonality	Polyclonal
Concentration	Lot specific
Conjugation	Unconjugated
Purification	Affinity purification
Dilution Range	WB:1:500-1:1000 ELISA:Recommended starting concentration is 1 µg/mL. Please optimize the concentration based on your specific assay requirements.
Formulation	PBS with 0.01% Thimerosal, 50% Glycerol, pH 7.3.
Isotype	IgG
Molecular Weight	Protein Mw: 118kDa Observed Mw: 130kDa
Storage Instruction	Store at -20°C for up to 1 year from the date of receipt, and avoid repeat freeze-thaw cycles.

TARGET INFORMATION

Gene ID	154796
Gene Symbol	AMOT
UniProt ID	AMOT_HUMAN
Immunogen Region	1000-1084
Immunogen Sequence	QTQAPTSAPAVAPTPTPT PAVAQAEVPASPATGPGPHR LSIPSLTCNPDKTDGPFVHHS NTLERKTPIQILGQEPDAEM VEYLI
Specificity	A synthetic peptide corresponding to a sequence within amino acids 1000-1084 of human AMOT (NP_001106962.1).

ADDITIONAL INFORMATION

Note STRICTLY FOR FURTHER SCIENTIFIC RESEARCH USE ONLY (RUO). MUST NOT TO BE USED IN DIAGNOSTIC OR THERAPEUTIC APPLICATIONS.



Western blot analysis of lysates from Mouse lung using AMOT Rabbit polyclonal antibody (STJ11104583) at 1:1000 dilution. Secondary antibody: HRP Goat Anti-Rabbit IgG (H+L) (STJS000856) at 1:10000 dilution. Lysates/proteins: 25 µg per lane. Blocking buffer: 3% nonfat dry milk in TBST. Detection: ECL Enhanced Kit. Exposure time: 120s.