

Anti-FUS antibody (297-526) (STJ11104575)

GENERAL INFORMATION

Product Type	Primary antibodies
Applications	WB/IHC-P/IP/ELISA
Host / Source	Rabbit
Reactivity	Human/Mouse/Rat

PRODUCT PROPERTIES

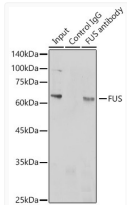
Clonality	Polyclonal
Concentration	Lot specific
Conjugation	Unconjugated
Purification	Affinity purification
Dilution Range	WB:1:500-1:2000 IHC-P:1:50-1:200 IP:0.5 Mu g-4 Mu g antibody for 200 Mu g-400 Mu g extracts of whole cells ELISA:Recommended starting concentration is 1 Mu g/mL. Please optimize the concentration based on your specific assay requirements.
Formulation	PBS with 0.02% Sodium Azide, 50% Glycerol, pH 7.3.
Isotype	IgG
Molecular Weight	Protein Mw: 53kDa Observed Mw: Refer to figures
Storage Instruction	Store at -20°C for up to 1 year from the date of receipt, and avoid repeat freeze-thaw cycles.

TARGET INFORMATION

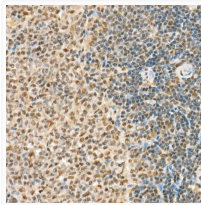
Gene ID	2521
Gene Symbol	FUS
UniProt ID	FUS_HUMAN
Immunogen Region	297-526
Immunogen Sequence	TIESVADYFKQIGIITNKK TGQPMINLYTDRETGKLGKE ATVSFDDPPSAKA AIDWFDG KEFSGNPIKVSFATRRA DFN RGGNGRGGRRGGP MGRGG YGGGGSGGGRRGGFPSSGGGG GGGQQRAGDWKCPNPTCENM NFSWRNECNQCKAPKPDGPG GGPGGSHMGGNYGDDRRGGR GGYDRGGYRGRGDRGGFRG GRGGGDRGGFGPGKMDSRGE HRQDRRERPY
Specificity	Recombinant fusion protein containing a sequence corresponding to amino acids 297-526 of human FUS (NP_004951.1).

ADDITIONAL INFORMATION

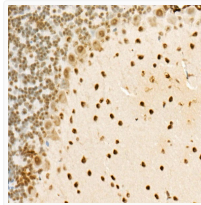
Note STRICTLY FOR FURTHER SCIENTIFIC RESEARCH USE ONLY (RUO). MUST NOT TO BE USED IN DIAGNOSTIC OR THERAPEUTIC APPLICATIONS.



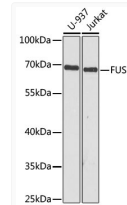
Immunoprecipitation analysis of 300 Mu g extracts of Jurkat cells using 3 Mu g FUS antibody (STJ11104575). Western blot was performed from the immunoprecipitate using FUS (STJ11104575) at a dilution of 1:1000.



Immunohistochemistry analysis of FUS in paraffin-embedded rat spleen using FUS Rabbit polyclonal antibody (STJ11104575) at dilution of 1:25 (40x lens). Perform high pressure antigen retrieval with 10 mM citrate buffer pH 6.0 before commencing with immunohistochemistry staining protocol.



Immunohistochemistry analysis of FUS in paraffin-embedded mouse brain using FUS Rabbit polyclonal antibody (STJ11104575) at dilution of 1:25 (40x lens). Perform high pressure antigen retrieval with 10 mM citrate buffer pH 6.0 before commencing with immunohistochemistry staining protocol.



Western blot analysis of various lysates using FUS Rabbit polyclonal antibody (STJ11104575) at 1:1000 dilution. Secondary antibody: HRP Goat Anti-Rabbit IgG (H+L) (STJS000856) at 1:10000 dilution. Lysates/proteins: 25 Mu g per lane. Blocking buffer: 3% nonfat dry milk in TBST. Detection: ECL Basic Kit. Exposure time: 1s.