

Anti-CSPG4 antibody (1950-2210) (STJ11104564)

GENERAL INFORMATION

Product Type	Primary antibodies
Applications	WB/IHC-P/IF/ICC/ELISA
Host / Source	Rabbit
Reactivity	Human/Mouse

PRODUCT PROPERTIES

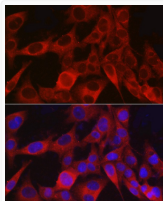
Clonality	Polyclonal
Concentration	Lot specific
Conjugation	Unconjugated
Purification	Affinity purification
Dilution Range	WB:1:2000-1:7000 IHC-P:1:50-1:200 IF/CC:1:50-1:200 ELISA:Recommended starting concentration is 1 Mu g/mL. Please optimize the concentration based on your specific assay requirements.
Formulation	PBS with 0.05% Proclin300, 50% Glycerol, pH 7.3.
Isotype	IgG
Molecular Weight	Protein Mw: 251kDa Observed Mw: 250-450kDa
Storage Instruction	Store at -20°C for up to 1 year from the date of receipt, and avoid repeat freeze-thaw cycles.

TARGET INFORMATION

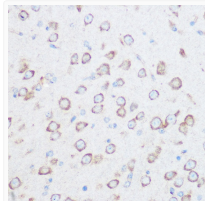
Gene ID	1464
Gene Symbol	CSPG4
UniProt ID	CSPG4_HUMAN
Immunogen Region	1950-2210
Immunogen Sequence	LEV PQALGRSSLSQQQLRVV SDREEPEAAYRLIQGPQYGH LLVGGRP TSAFSQFQIDQGE VVFAFTNFSSSHDHFRLVAL ARGVNASAVVNVTVRALLHV WAGGPWPQGATLRLDPTVLD AGELANRTGVSVPFRRLLEGP RHGRVVRVPPRARTPEGGSQL VEQFTQQDLEDGRLGLEVGR PEGRAPGPAGDSLTELWQAQ GVPPAVASLDFATEPYNAAR PYSVALLSVPEARTEAGK
Specificity	Recombinant fusion protein containing a sequence corresponding to amino acids 1950-2210 of human NG2/CSPG4 (NP_001888.2).

ADDITIONAL INFORMATION

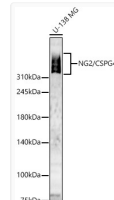
Note **STRICTLY FOR FURTHER SCIENTIFIC RESEARCH USE ONLY (RUO). MUST NOT TO BE USED IN DIAGNOSTIC OR THERAPEUTIC APPLICATIONS.**



Immunofluorescence analysis of A-375 cells using NG2/CSPG4 Rabbit polyclonal antibody (STJ11104564) at dilution of 1:100 (40x lens). Secondary antibody: Cy3 Goat Anti-Rabbit IgG (H+L) at 1:500 dilution. Blue: DAPI for nuclear staining.



Immunohistochemistry analysis of NG2/CSPG4 in paraffin-embedded Mouse brain using NG2/CSPG4 Rabbit polyclonal antibody (STJ11104564) at dilution of 1:100 (40x lens). Perform microwave antigen retrieval with 10 mM Tris/EDTA buffer pH 9.0 before commencing with immunohistochemistry staining protocol.



Western blot analysis of lysates from U-138 MG cells, using NG2/CSPG4 Rabbit polyclonal antibody (STJ11104564) at 1:6000 dilution. Secondary antibody: HRP Goat Anti-Rabbit IgG (H+L) (STJS000856) at 1:10000 dilution. Lysates/proteins: 25ug per lane. Blocking buffer: 3% nonfat dry milk in TBST. Detection: ECL Basic Kit. Exposure time: 180s.