

Anti-S100A4 antibody (1-101) (STJ11104557)

GENERAL INFORMATION

Product Type	Primary antibodies
Applications	WB/IHC-P/IF/ICC/ELISA
Host / Source	Rabbit
Reactivity	Human/Mouse/Rat

PRODUCT PROPERTIES

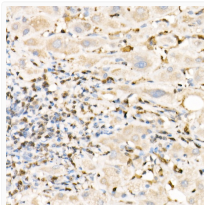
Clonality	Polyclonal
Concentration	Lot specific
Conjugation	Unconjugated
Purification	Affinity purification
Dilution Range	WB:1:500-1:1000 IHC-P:1:50-1:200 IF/CC:1:50-1:200 ELISA:Recommended starting concentration is 1 Mu g/mL. Please optimize the concentration based on your specific assay requirements.
Formulation	PBS with 0.09% Sodium Azide, 50% Glycerol, pH 7.3.
Isotype	IgG
Molecular Weight	Protein Mw: 12kDa Observed Mw: Refer to figures
Storage Instruction	Store at -20°C for up to 1 year from the date of receipt, and avoid repeat freeze-thaw cycles.

TARGET INFORMATION

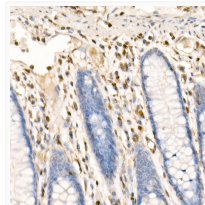
Gene ID	6275
Gene Symbol	S100A4
UniProt ID	S10A4_HUMAN
Immunogen Region	1-101
Immunogen Sequence	MACPLEKALDVMVSTFFHKYS GKEGDKFKLNKSELKELLTR ELPSFLGKRTDEAAAFQKLMS NLDNDRDNEVDFQEYCVFLS CIAMMCNEFFEGFPDKQPRK K
Specificity	Recombinant fusion protein containing a sequence corresponding to amino acids 1-101 of human FSP1/S100A4 (NP_002952.1).

ADDITIONAL INFORMATION

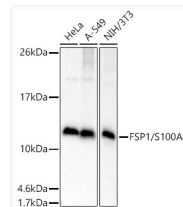
Note **STRICTLY FOR FURTHER SCIENTIFIC RESEARCH USE ONLY (RUO). MUST NOT TO BE USED IN DIAGNOSTIC OR THERAPEUTIC APPLICATIONS.**



Immunohistochemistry analysis of FSP1/S100A4 in paraffin-embedded human liver using FSP1/S100A4 Rabbit polyclonal antibody (STJ11104557) at dilution of 1:100 (40x lens). Perform high pressure antigen retrieval with 10 mM citrate buffer pH 6. 0 before commencing with immunohistochemistry staining protocol.



Immunohistochemistry analysis of FSP1/S100A4 in paraffin-embedded human colon using FSP1/S100A4 Rabbit polyclonal antibody (STJ11104557) at dilution of 1:100 (40x lens). Perform high pressure antigen retrieval with 10 mM citrate buffer pH 6. 0 before commencing with immunohistochemistry staining protocol.



Western blot analysis of various lysates using FSP1/S100A4 Rabbit polyclonal antibody (STJ11104557) at 1:1000 dilution. Secondary antibody: HRP Goat Anti-Rabbit IgG (H+L) (STJS000856) at 1:10000 dilution. Lysates/proteins: 25 Mu g per lane. Blocking buffer: 3% nonfat dry milk in TBST. Detection: ECL Basic Kit. Exposure time: 3s.