

Anti-SHMT2 antibody (265-504) (STJ11104552)

GENERAL INFORMATION

Product Type	Primary antibodies
Applications	WB/IHC-P/IF/ICC/IP/ELISA
Host / Source	Rabbit
Reactivity	Human/Mouse/Rat

PRODUCT PROPERTIES

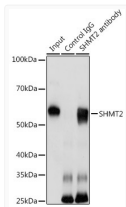
Clonality	Polyclonal
Concentration	Lot specific
Conjugation	Unconjugated
Purification	Affinity purification
Dilution Range	WB:1:500-1:1000 IHC-P:1:50-1:100 IF/ICC:1:50-1:200 IP:0.5 Mu g-4 Mu g antibody for 200 Mu g-400 Mu g extracts of whole cells ELISA:Recommended starting concentration is 1 Mu g/mL. Please optimize the concentration based on your specif
Formulation	PBS with 0.09% Sodium Azide, 50% Glycerol, pH 7.3.
Isotype	IgG
Molecular Weight	Protein Mw: 56kDa Observed Mw: 56kDa
Storage Instruction	Store at-20°C for up to 1 year from the date of receipt, and avoid repeat freeze-thaw cycles.

TARGET INFORMATION

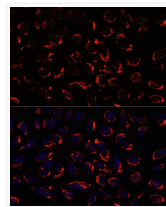
Gene ID	6472
Gene Symbol	SHMT2
UniProt ID	GLYM_HUMAN
Immunogen Region	265-504
Immunogen Sequence	PSPFKHADIVTTTTHTKLRG ARSGLIFYRKGVKAVDPKTK REIPYTFEDRINFAVFPSSLQ GGPHNHAIAAVALKQACT PIMFREYSLQVLKNARAMADA LLEGGYSLVSGGTDNHLVLV DLRPFKGLDGARAERVLVLS ITANKNTCPGDRSAITPGLL RLGAPALTSRQFFREDDFRV VDFIDEGVNIQLEVKSTAK LQDFKSFLLKDETSQRLAN LRQRVEQFARAFMPGFDE
Specificity	Recombinant fusion protein containing a sequence corresponding to amino acids 265-504 of human SHMT2 (NP_005403.2).

ADDITIONAL INFORMATION

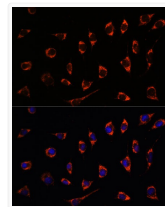
Note STRICTLY FOR FURTHER SCIENTIFIC RESEARCH USE ONLY (RUO). MUST NOT TO BE USED IN DIAGNOSTIC OR THERAPEUTIC APPLICATIONS.



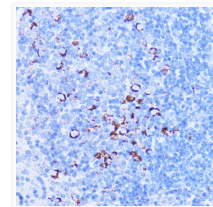
Immunoprecipitation analysis of 200 Mu g extracts of HeLa cells using 3 Mu g SHMT2 antibody (STJ11104552). Western blot was performed from the immunoprecipitate using SHMT2 antibody (STJ11104552) at a dilution of 1:1000.



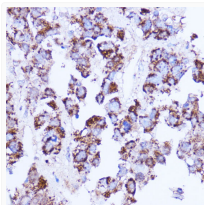
Immunofluorescence analysis of U-2 OS cells using SHMT2 Rabbit polyclonal antibody (STJ11104552) at dilution of 1:100. Secondary antibody: Cy3 Goat Anti-Rabbit IgG (H+L) at 1:500 dilution. Blue: DAPI for nuclear staining.



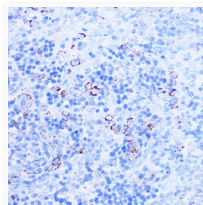
Immunofluorescence analysis of L929 cells using SHMT2 Rabbit polyclonal antibody (STJ11104552) at dilution of 1:100. Secondary antibody: Cy3 Goat Anti-Rabbit IgG (H+L) at 1:500 dilution. Blue: DAPI for nuclear staining.



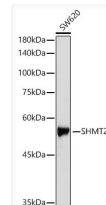
Immunohistochemistry analysis of SHMT2 in paraffin-embedded mouse spleen using SHMT2 Rabbit polyclonal antibody (STJ11104552) at dilution of 1:100 (40x lens). Perform microwave antigen retrieval with 10 mM PBS buffer pH 7. 2 before commencing with immunohistochemistry staining protocol.



Immunohistochemistry analysis of SHMT2 in paraffin-embedded human liver cancer using SHMT2 Rabbit polyclonal antibody (STJ11104552) at dilution of 1:100 (40x lens). Perform microwave antigen retrieval with 10 mM PBS buffer pH 7. 2 before commencing with immunohistochemistry staining protocol.



Immunohistochemistry analysis of SHMT2 in paraffin-embedded rat spleen using SHMT2 Rabbit polyclonal antibody (STJ11104552) at dilution of 1:100 (40x lens). Perform microwave antigen retrieval with 10 mM PBS buffer pH 7. 2 before commencing with immunohistochemistry staining protocol.



Western blot analysis of lysates from SW620 cells, using SHMT2 Rabbit polyclonal antibody (STJ11104552) at 1:1000 dilution. Secondary antibody: HRP Goat Anti-Rabbit IgG (H+L) (STJS000856) at 1:10000 dilution. Lysates/proteins: 25ug per lane. Blocking buffer: 3% nonfat dry milk in TBST. Detection: ECL Basic Kit. Exposure time: 1s.