

## Anti-KDM1A antibody (130-380) (STJ11104550)

### GENERAL INFORMATION

Product Type	Primary antibodies
Applications	WB/IHC-P/IF/ICC/ELISA
Host / Source	Rabbit
Reactivity	Human/Mouse/Rat

### PRODUCT PROPERTIES

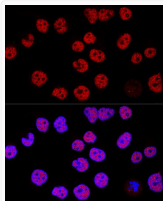
Clonality	Polyclonal
Concentration	Lot specific
Conjugation	Unconjugated
Purification	Affinity purification
Dilution Range	WB:1:500-1:1000 IHC-P:1:50-1:200 IF/ICC:1:50-1:200 ELISA:Recommended starting concentration is 1 Mu g/mL. Please optimize the concentration based on your specific assay requirements.
Formulation	PBS with 0.05% Proclin300, 50% Glycerol, pH 7.3.
Isotype	IgG
Molecular Weight	Protein Mw: 93kDa Observed Mw: 110kDa
Storage Instruction	Store at -20°C for up to 1 year from the date of receipt, and avoid repeat freeze-thaw cycles.

### TARGET INFORMATION

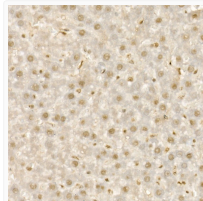
Gene ID	<a href="#">23028</a>
Gene Symbol	<a href="#">KDM1A</a>
UniProt ID	<a href="#">KDM1A_HUMAN</a>
Immunogen Region	130-380
Immunogen Sequence	LSEDEYYSEEERNAKAEKEK KLPPPPQAPPEEENESEPE EPSGVEGAAFQSRPLPHDRMT SQAACFPDIISGPQQTQKV FLFIRNRTLQLWLDNPKIQL TFEATLQOLEAPYNSDTVLV HRVHSYLERHGLNFGIYKR IKPLPTKKTGKVIIGSGVS GLAAARQLQSFQMDVTLLEA RDRVGGRRVATFRKGNVYADL GAMVVTGLGGNPMVAVSKQV NMELEAKIKQKCPLYEANGQ
Specificity	Recombinant fusion protein containing a sequence corresponding to amino acids 130-380 of human KDM1A (NP_055828.2).

### ADDITIONAL INFORMATION

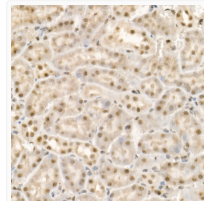
Note STRICTLY FOR FURTHER SCIENTIFIC RESEARCH USE ONLY (RUO). MUST NOT TO BE USED IN DIAGNOSTIC OR THERAPEUTIC APPLICATIONS.



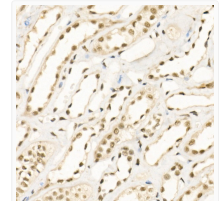
Confocal immunofluorescence analysis of HeLa cells using KDM1 Polyclonal Antibody (STJ11104550) at dilution of 1:200. Blue: DAPI for nuclear staining.



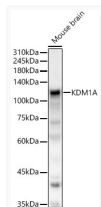
Immunohistochemistry analysis of paraffin-embedded rat liver using KDM1A Rabbit polyclonal antibody (STJ11104550) at dilution of 1:100 (40x lens). Perform high pressure antigen retrieval with 10 mM citrate buffer pH 6.0 before commencing with immunohistochemistry staining protocol.



Immunohistochemistry analysis of paraffin-embedded mouse kidney using KDM1A Rabbit polyclonal antibody (STJ11104550) at dilution of 1:100 (40x lens). Perform high pressure antigen retrieval with 10 mM citrate buffer pH 6.0 before commencing with immunohistochemistry staining protocol.



Immunohistochemistry analysis of paraffin-embedded human kidney using KDM1A Rabbit polyclonal antibody (STJ11104550) at dilution of 1:100 (40x lens). Perform high pressure antigen retrieval with 10 mM citrate buffer pH 6.0 before commencing with immunohistochemistry staining protocol.



Western blot analysis of Mouse brain, using KDM1A antibody (STJ11104550) at 1:500 dilution. Secondary antibody: HRP Goat Anti-Rabbit IgG (H+L) (STJS000856) at 1:10000 dilution. Lysates/proteins: 25 Mu g per lane. Blocking buffer: 3% nonfat dry milk in TBST. Detection: ECL Basic Kit. Exposure time: 20s.