

Anti-HINT1 antibody (1-126) (STJ11104546)

GENERAL INFORMATION

Product Type	Primary antibodies
Applications	WB/IF/ICC/ELISA
Host / Source	Rabbit
Reactivity	Human/Mouse/Rat

PRODUCT PROPERTIES

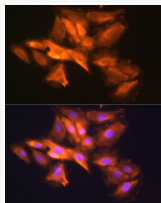
Clonality	Polyclonal
Concentration	Lot specific
Conjugation	Unconjugated
Purification	Affinity purification
Dilution Range	WB:1:500-1:1000 IF/CC:1:50-1:200 ELISA:Recommended starting concentration is 1 Mu g/mL. Please optimize the concentration based on your specific assay requirements.
Formulation	PBS with 0.02% Sodium Azide, 50% Glycerol, pH 7.3.
Isotype	IgG
Molecular Weight	Protein Mw: 14kDa Observed Mw: Refer to figures
Storage Instruction	Store at -20°C for up to 1 year from the date of receipt, and avoid repeat freeze-thaw cycles.

TARGET INFORMATION

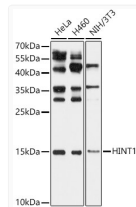
Gene ID	3094
Gene Symbol	HINT1
UniProt ID	HINT1_HUMAN
Immunogen Region	1-126
Immunogen Sequence	MADEIAKAQVARPGGDTIFG KIIKKEIPAKIIFEDDRCLA FHDISPQAPTHFLVIPKKHI SQISVAEDDDDESLLGHLMIIV GKKCAADLGLNKGYRMVVNE GSDGGQSVYHVHLHVLGGRQ MHWPPG
Specificity	Recombinant fusion protein containing a sequence corresponding to amino acids 1-126 of human HINT1 (NP_005331.1).

ADDITIONAL INFORMATION

Note STRICTLY FOR FURTHER SCIENTIFIC RESEARCH USE ONLY (RUO). MUST NOT TO BE USED IN DIAGNOSTIC OR THERAPEUTIC APPLICATIONS.



Immunofluorescence analysis of H9C2 cells using HINT1 Rabbit polyclonal antibody (STJ11104546) at dilution of 1:100 (40x lens). Secondary antibody: Cy3 Goat Anti-Rabbit IgG (H+L) at 1:500 dilution. Blue: DAPI for nuclear staining.



Western blot analysis of various lysates, using HINT1 Rabbit polyclonal antibody (STJ11104546) at 1:1000 dilution. Secondary antibody: HRP Goat Anti-Rabbit IgG (H+L) (STJS000856) at 1:10000 dilution. Lysates/proteins: 25 Mu g per lane. Blocking buffer: 3% nonfat dry milk in TBST. Detection: ECL Basic Kit. Exposure time: 5s.