

## Anti-IRAK4 antibody (1-200) (STJ11104538)

### GENERAL INFORMATION

Product Type	Primary antibodies
Applications	WB/IF/ICC/ELISA
Host / Source	Rabbit
Reactivity	Human/Mouse/Rat

### PRODUCT PROPERTIES

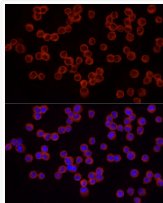
Clonality	Polyclonal
Concentration	Lot specific
Conjugation	Unconjugated
Purification	Affinity purification
Dilution Range	WB:1:500-1:2000 IF/CC:1:50-1:200 ELISA:Recommended starting concentration is 1 µg/mL. Please optimize the concentration based on your specific assay requirements.
Formulation	PBS with 0.05% Proclin300, 50% Glycerol, pH 7.3.
Isotype	IgG
Molecular Weight	Protein Mw: 52kDa Observed Mw: 55kDa
Storage Instruction	Store at -20°C for up to 1 year from the date of receipt, and avoid repeat freeze-thaw cycles.

### TARGET INFORMATION

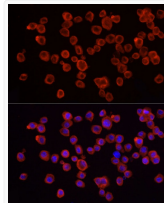
Gene ID	<a href="#">51135</a>
Gene Symbol	<a href="#">IRAK4</a>
UniProt ID	<a href="#">IRAK4_HUMAN</a>
Immunogen Region	1-200
Immunogen Sequence	MNKPITPSTYVRCNLNVLIR KLSDFIDPQEGWKKLAVAIAIK KPSGDDRYNQFHRRFEALL QTGKSPTSELLFDWGTNCT VGDLDVLLIQNEFFAPASLL LPDAVPKTANTLPSKEAITV QQKQMPFCDKDRTLMTVPVQN LEQSYMPDSSSPENKSLEV SDTRFHFSFSEYELKNVTNMF DERPISVGGNKMGEFGVV
Specificity	Recombinant fusion protein containing a sequence corresponding to amino acids 1-200 of human IRAK4 (NP_057207.2).

### ADDITIONAL INFORMATION

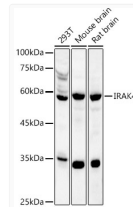
Note STRICTLY FOR FURTHER SCIENTIFIC RESEARCH USE ONLY (RUO). MUST NOT TO BE USED IN DIAGNOSTIC OR THERAPEUTIC APPLICATIONS.



Immunofluorescence analysis of THP-1 cells using IRAK4 Rabbit polyclonal antibody (STJ11104538) at dilution of 1:50 (40x lens). Blue: DAPI for nuclear staining.



Immunofluorescence analysis of RAW264.7 cells using IRAK4 Rabbit polyclonal antibody (STJ11104538) at dilution of 1:50 (40x lens). Blue: DAPI for nuclear staining.



Western blot analysis of various lysates, using IRAK4 Rabbit polyclonal antibody (STJ11104538) at 1:1000 dilution. Secondary antibody: HRP Goat Anti-Rabbit IgG (H+L) (STJS000856) at 1:10000 dilution. Lysates/proteins: 25µg per lane. Blocking buffer: 3% nonfat dry milk in TBST. Detection: ECL Basic Kit. Exposure time: 90s.